

PLANK

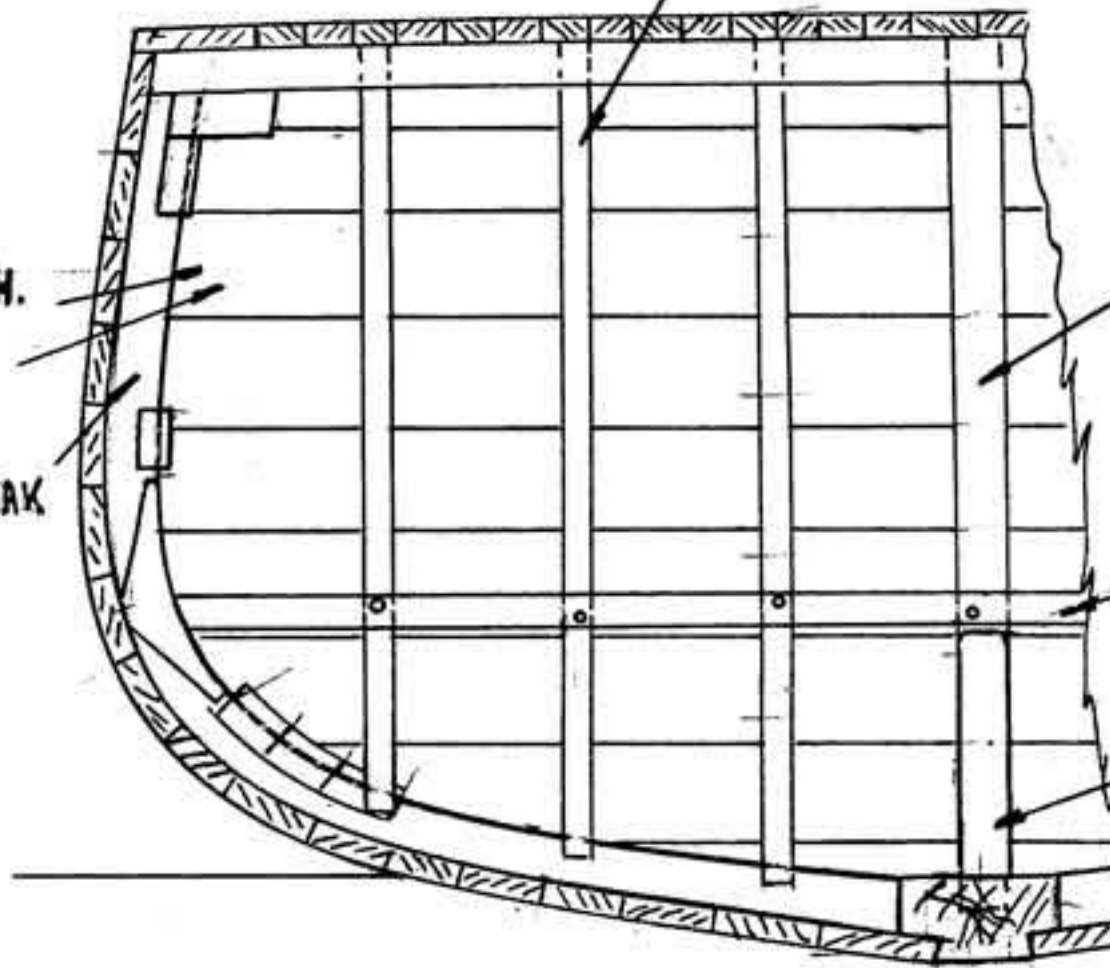
"

FASHI

PLANKING INSIDE $1\frac{3}{16}$ MAH.
" OUTSIDE $1\frac{3}{16}$ "

THICK PIECE $3\frac{3}{4} \times 2\frac{3}{4}$ S DAK

BATTENS $1\frac{7}{8}$ S x



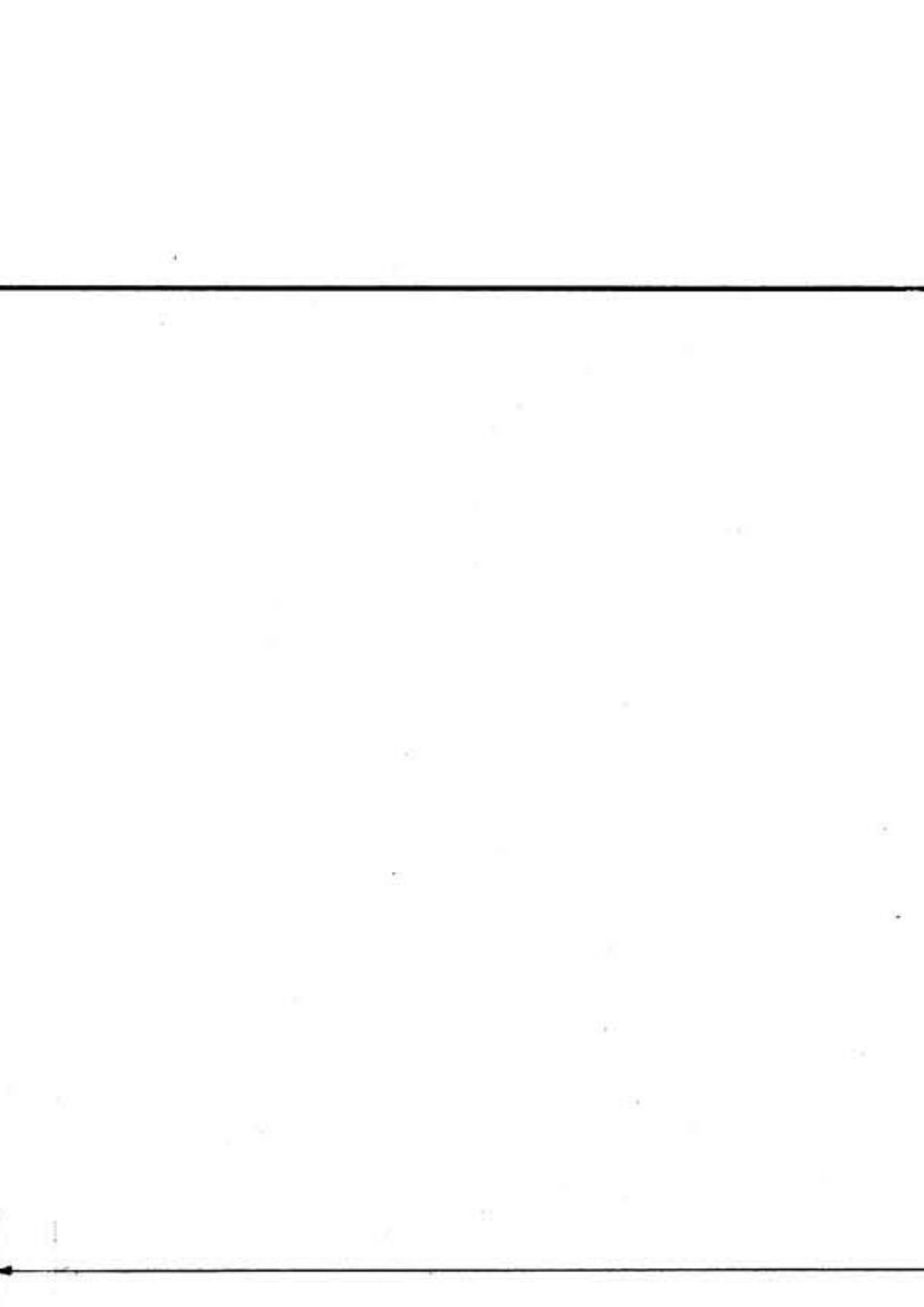
TRANSOM

x 2 $\frac{3}{4}$ M. OAK

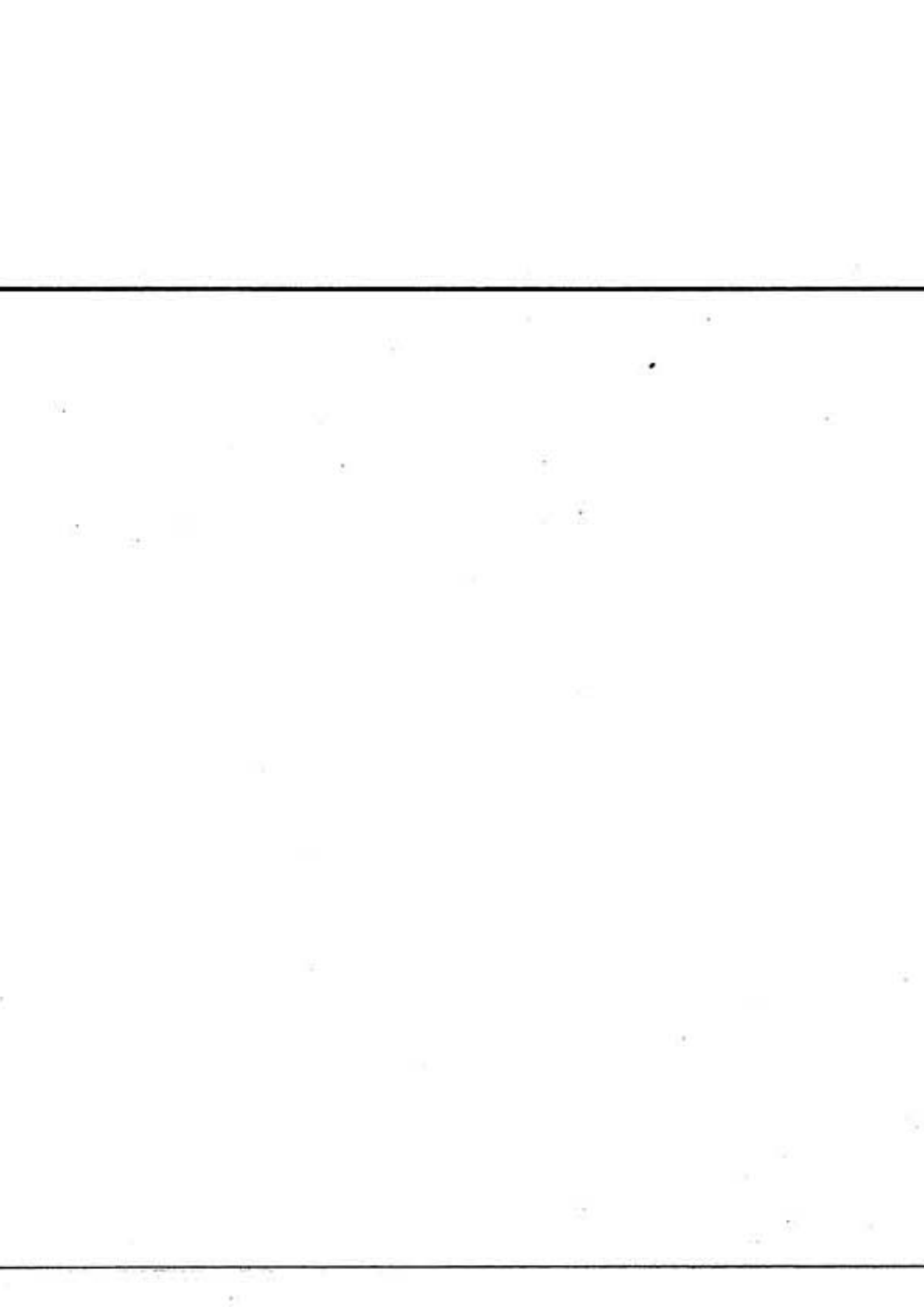
3 $\frac{3}{4}$ x 2 $\frac{3}{4}$ M. OAK

BRACE S. 2 $\frac{3}{4}$ x 6" AT C.L. OAK

KNEE 3 $\frac{3}{4}$ S. Y.C. CROOK
OR GALV'D STEEL



31' 11 1/2"

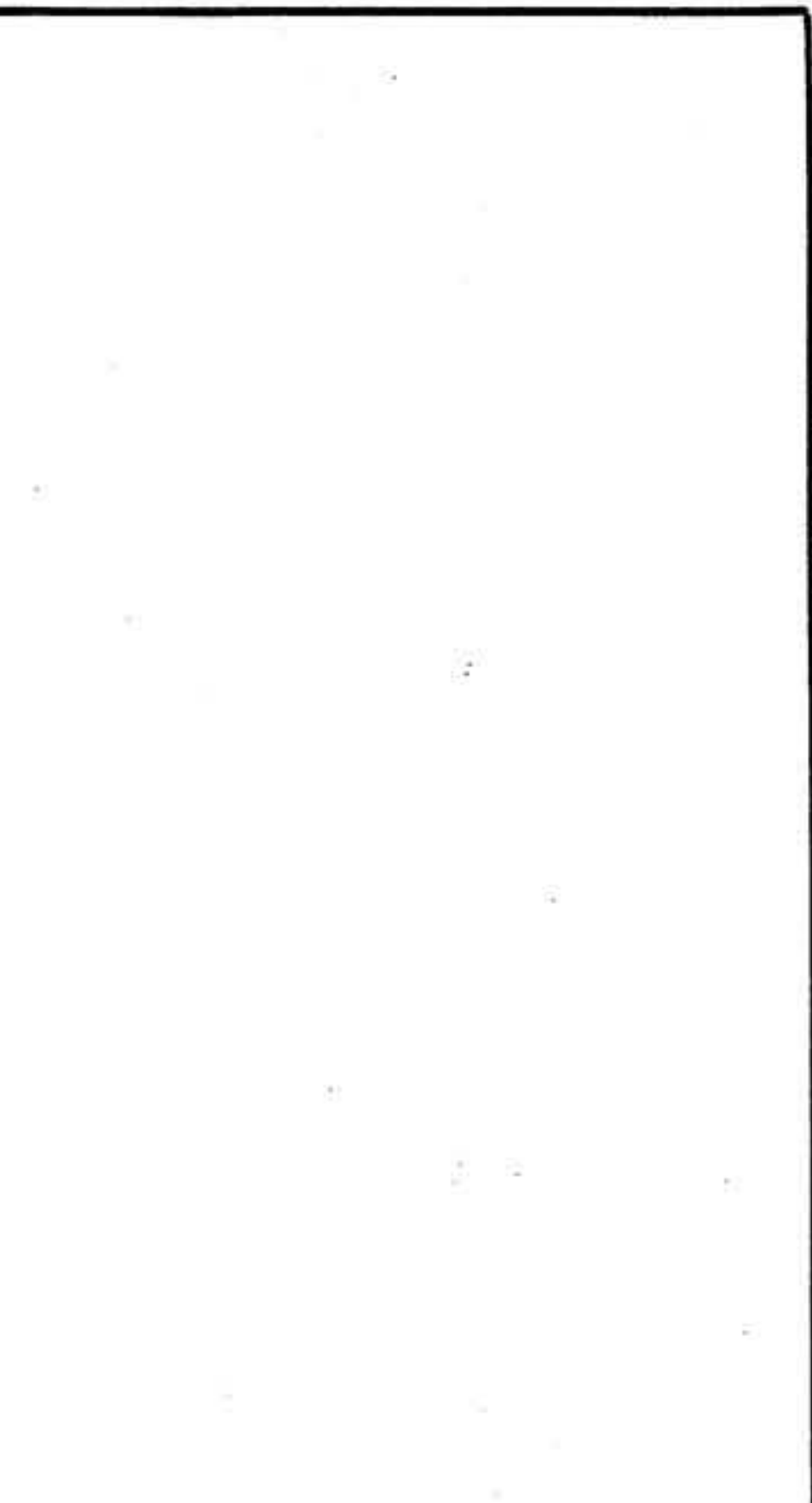




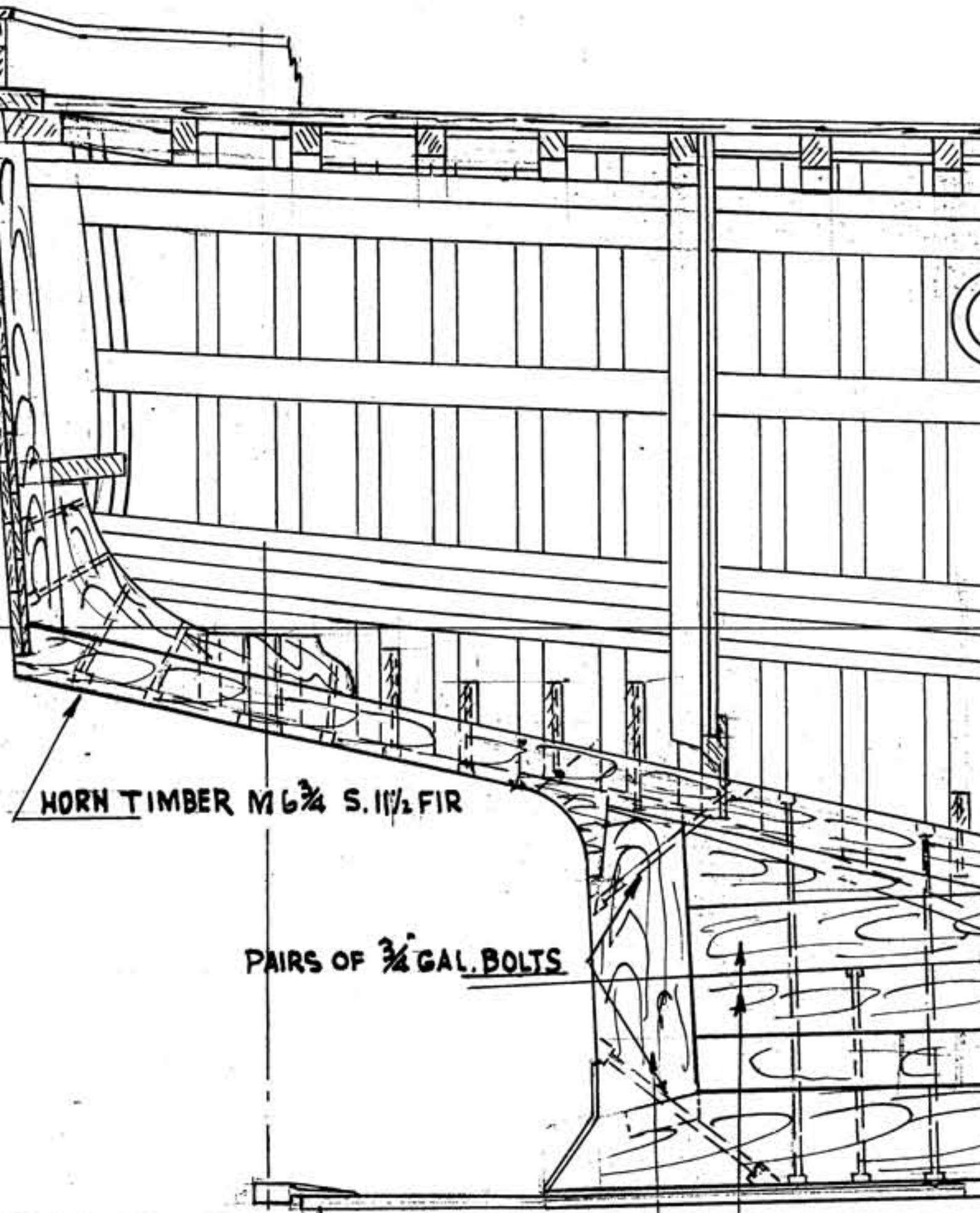
SHEET



BRASS PL. TOP OF STEM







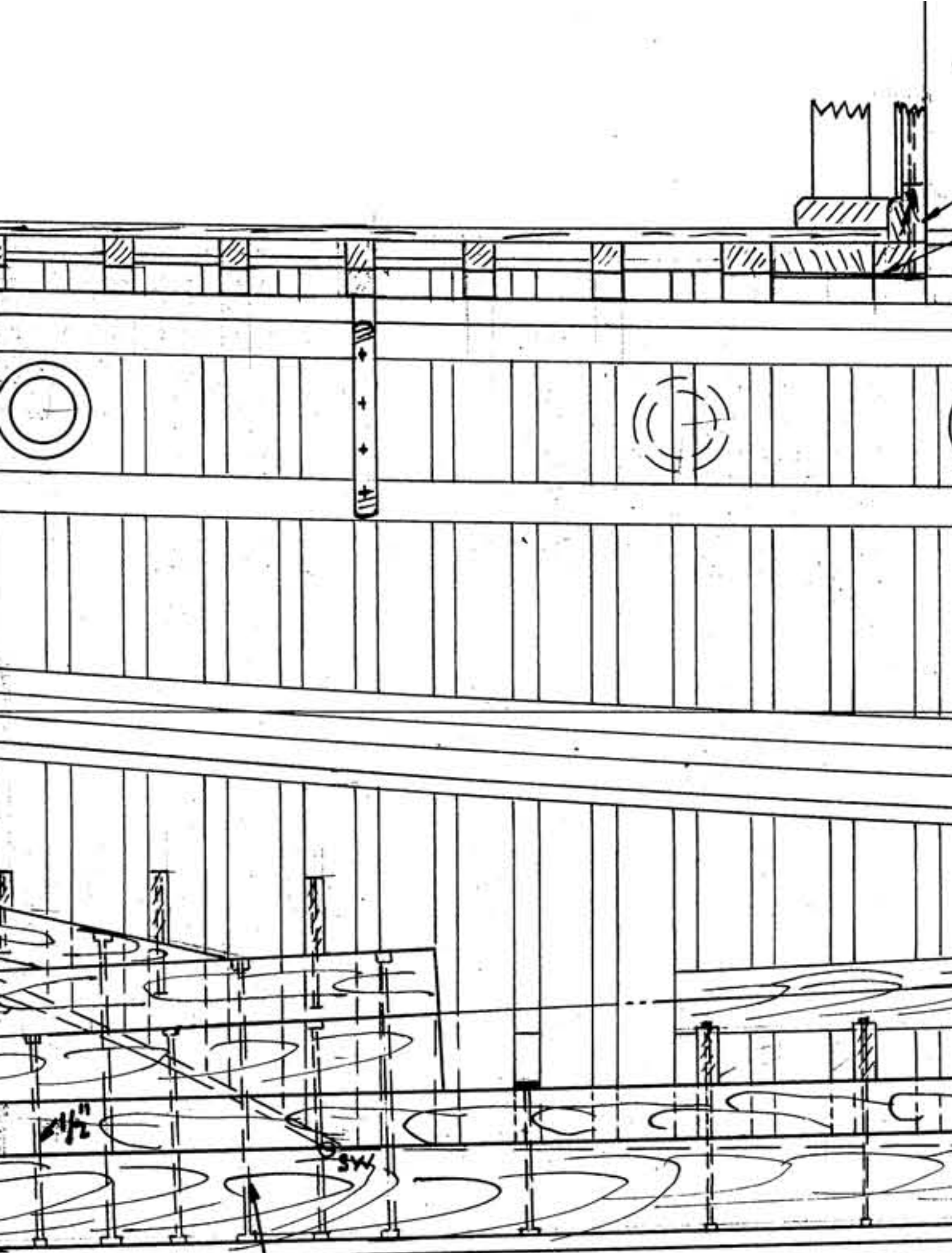
HORN TIMBER M $6\frac{3}{4}$ S. $11\frac{1}{2}$ FIR

PAIRS OF $\frac{3}{4}$ GAL. BOLTS

SHAFT LOGS

0

$\frac{1}{2}$



6 FIR SIDED 11 1/2

2
PAIRS OF 5/8 GALV'D BOLTS

FLO

COAMING 4 3/4 x 7 1/2 Y. CEDAR
1/2" HOLDING DOWN BOLTS
1/2" STEEL PL.

SHELF 2"
CLAMP 2"

P
ONLY

STRINGER

BILGE STRING

3
DOORS 2 1/4 S x 7 1/2 M. Y. CEDAR IN E. ROOM

4
SHOE GUM 2 x 7 3/4 F

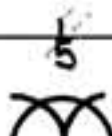
2 3/4 x 7 1/2 Y. CED
2 1/2 x 4 3/4 FIR

ER 2 1/2 x 4 3/4 FIR

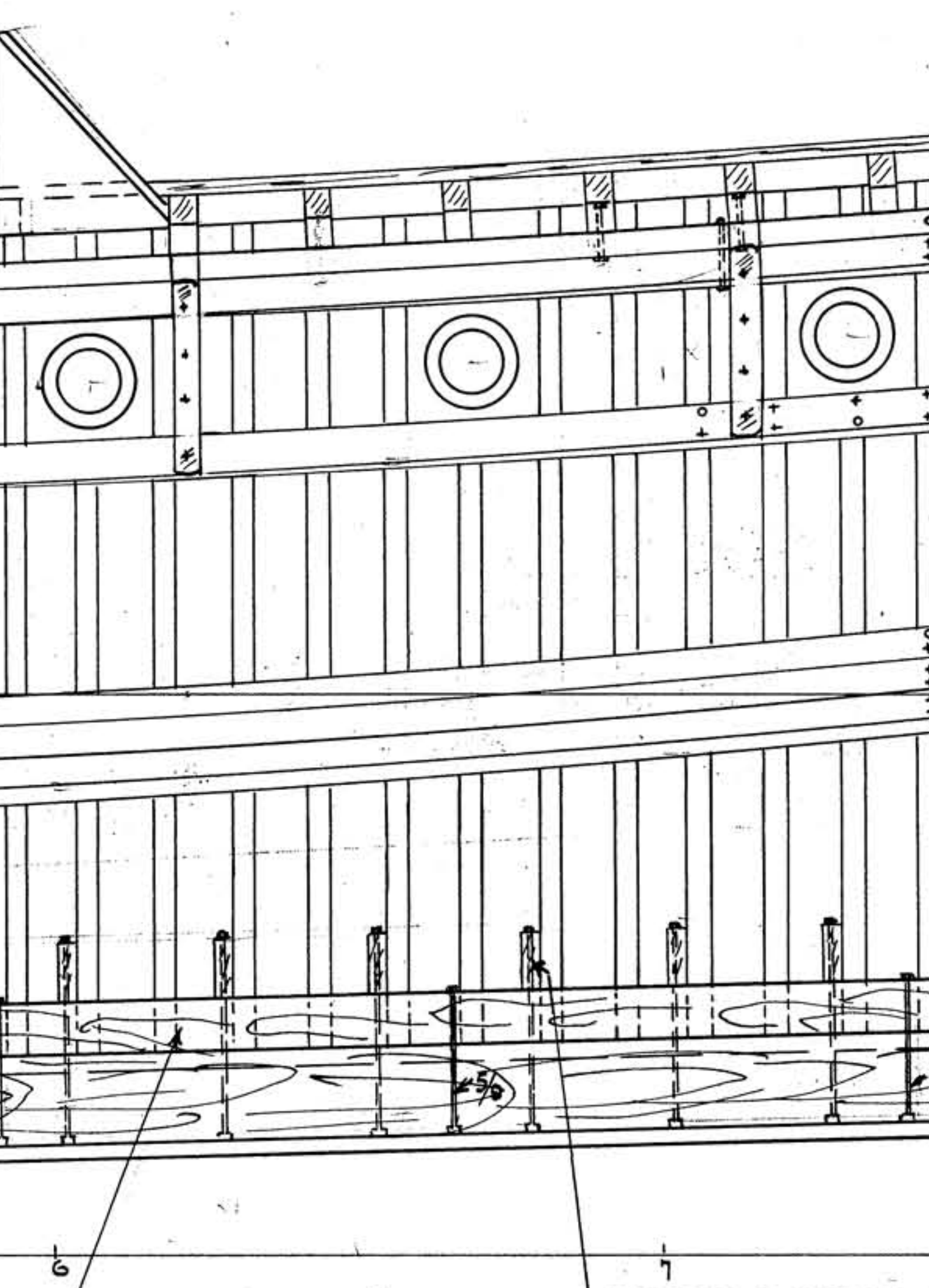
IGERS (3) 2 1/2 x 4 3/4 FIR



FASTENED TO KEEL



KEEL S. 7 3/4 x 11 1/2 M FIR

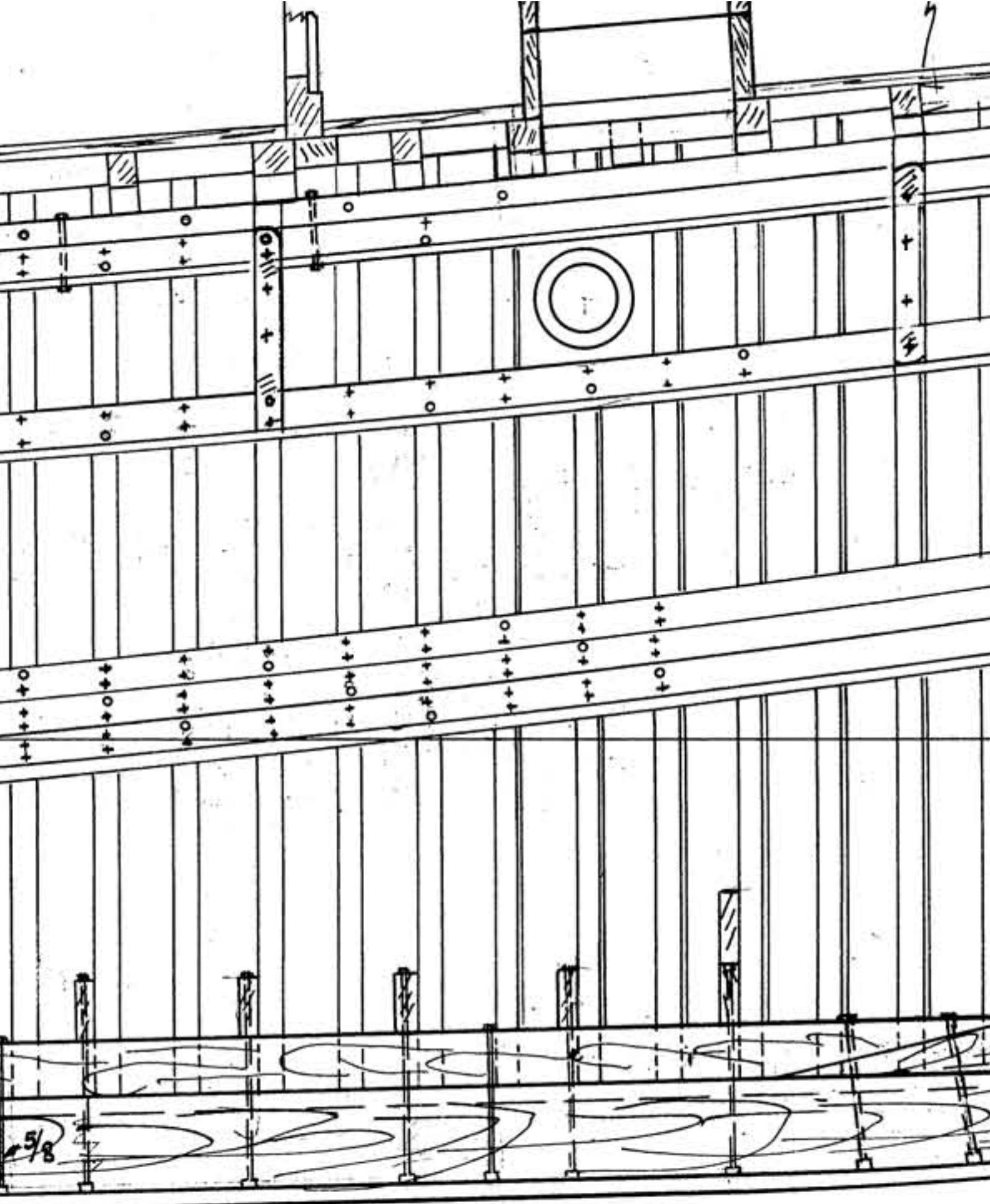


6

7

KEELSON 3 3/4" x 12 1/2" S.F.D.

FLOORS OUTSIDE

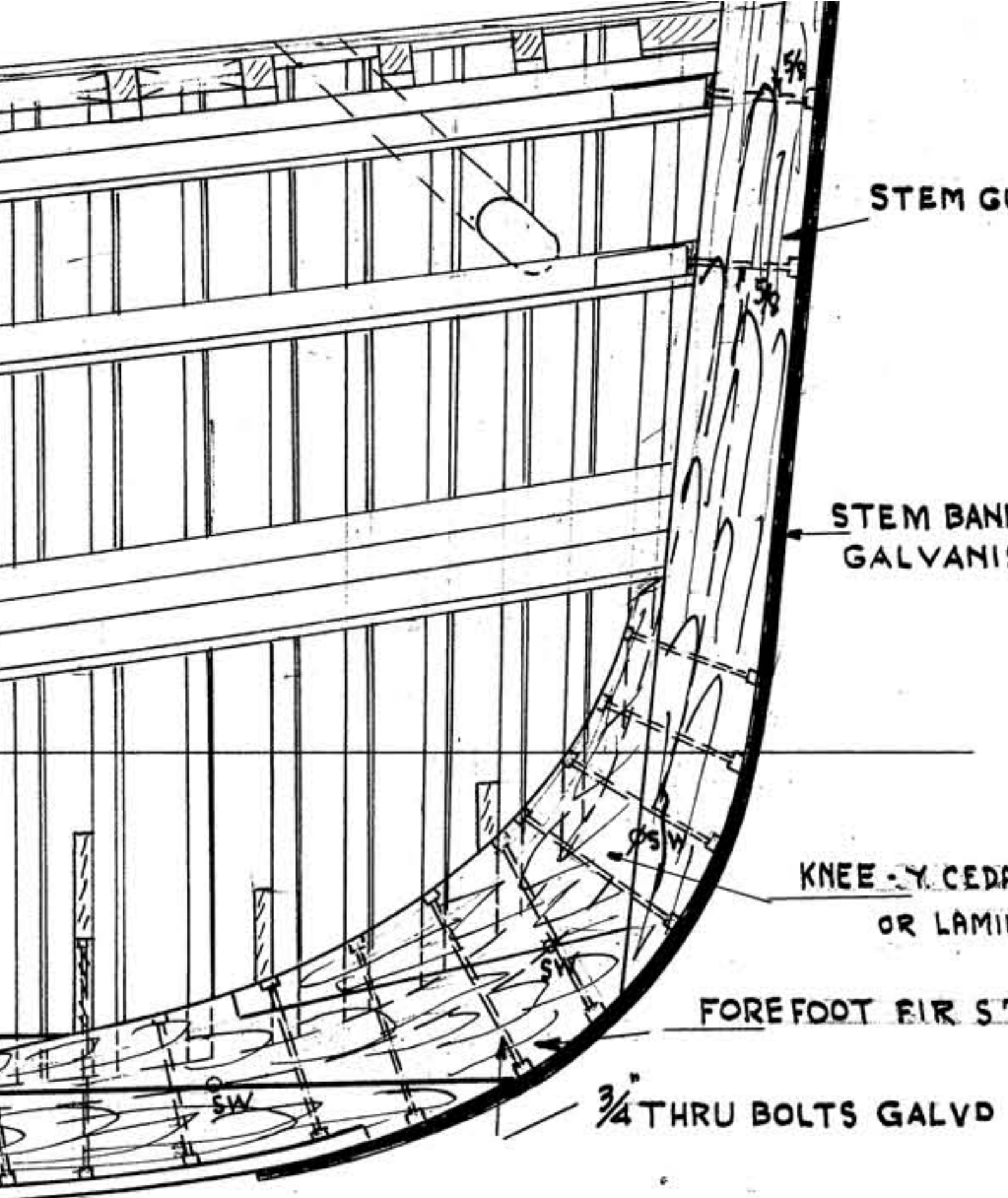


7

5/8

8

ENGINE ROOM



STEM G...

STEM BAND
GALVANI...

KNEE - Y. CEDR
OR LAMI...

FORE FOOT FIR S...

3/4" THRU BOLTS GALVD

9

9 1/2

10

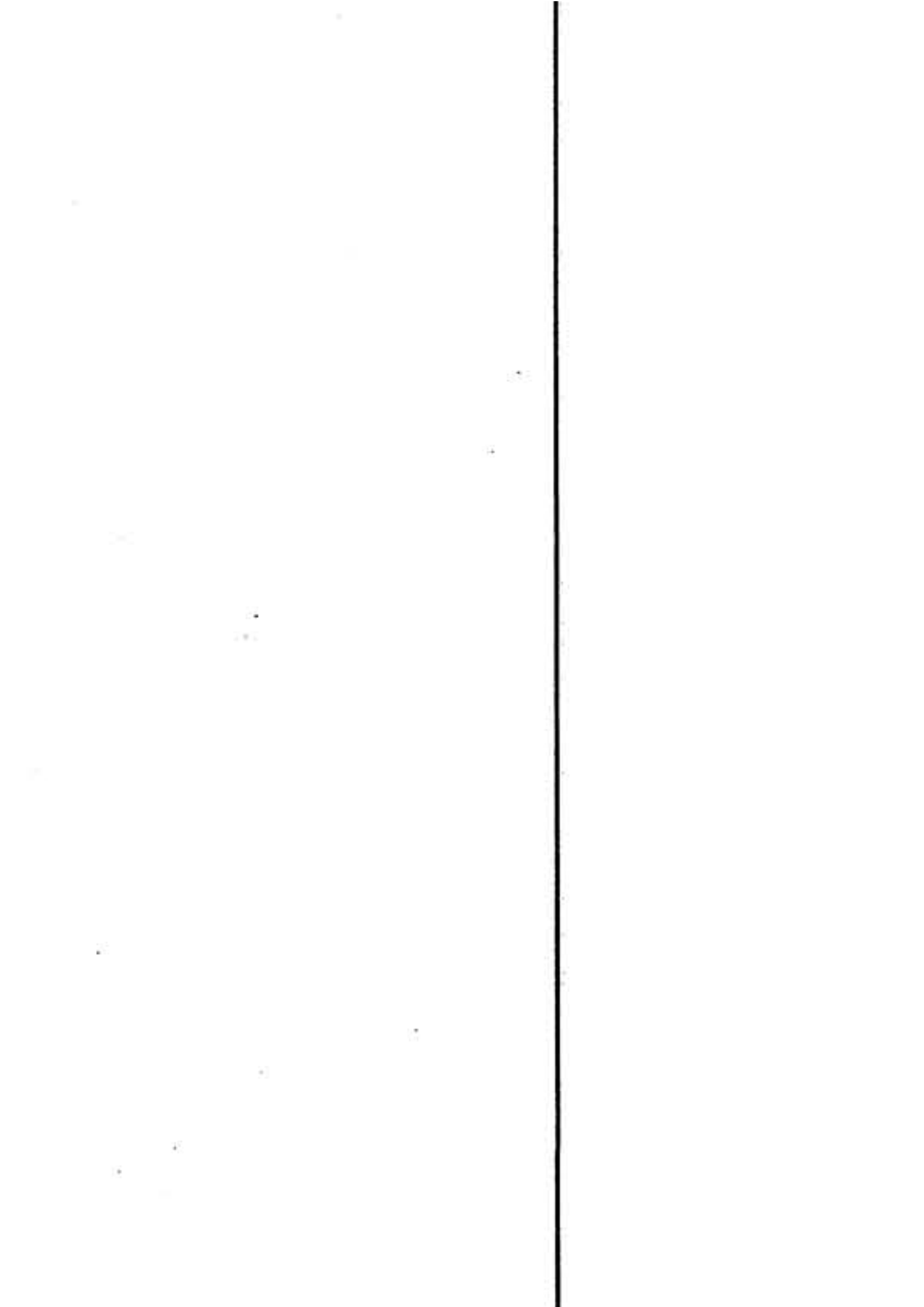
GUM S. 7"

ND 1/2" HALF ROUND
ISED

DAR CROOK

MINATED FIR

5 7 3/4"

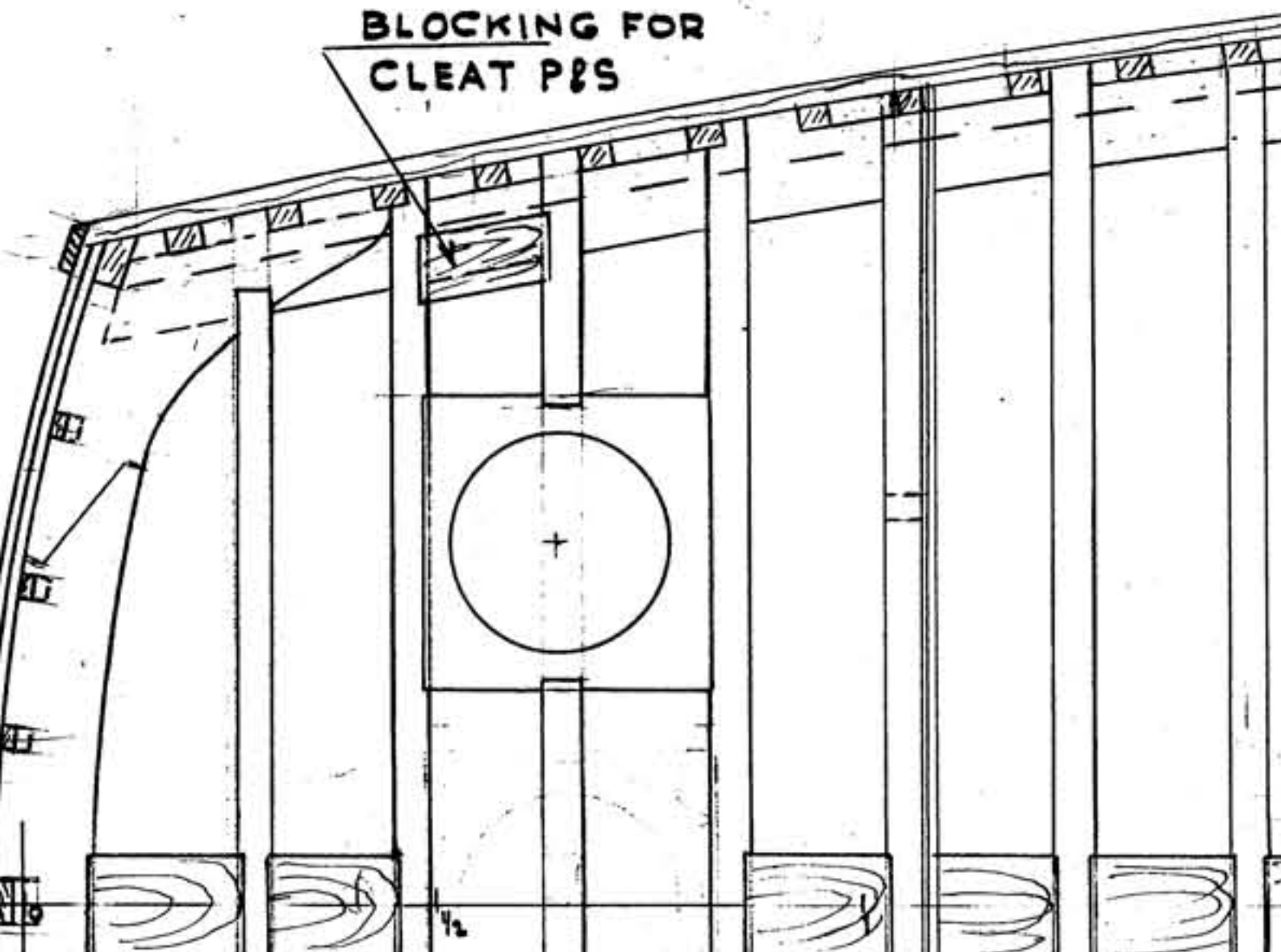




SKEG - 1 1/2" x 6" M.S.

SHAFT LOGS
STERN POST GUM

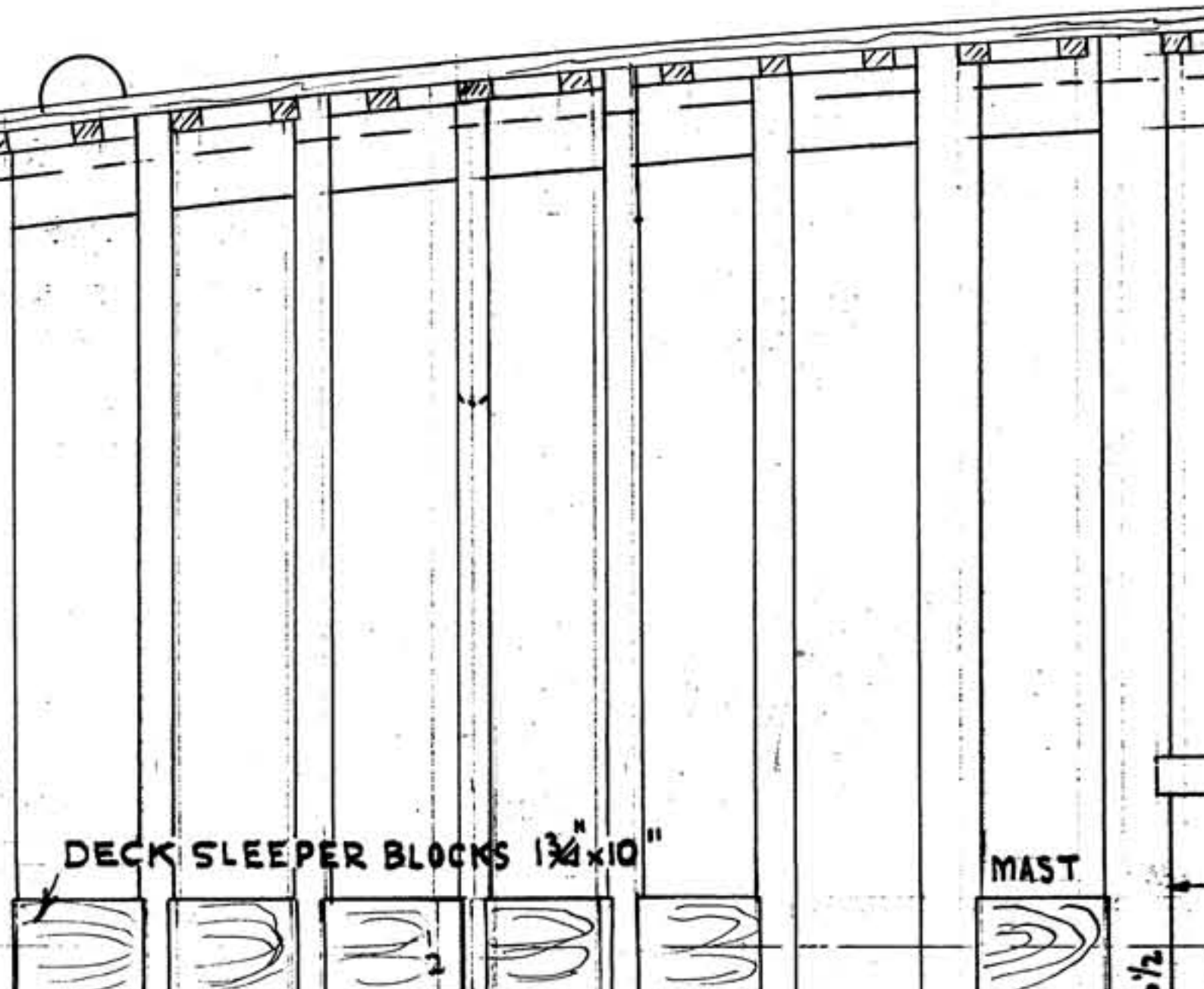
**BLOCKING FOR
CLEAT P&S**



1 PAIR SIDED 1 1/2"
1 M12" S. 1 1/2"

1 PAIRS OF 7/8 GALV BOLTS
SET UP ON WASHERS

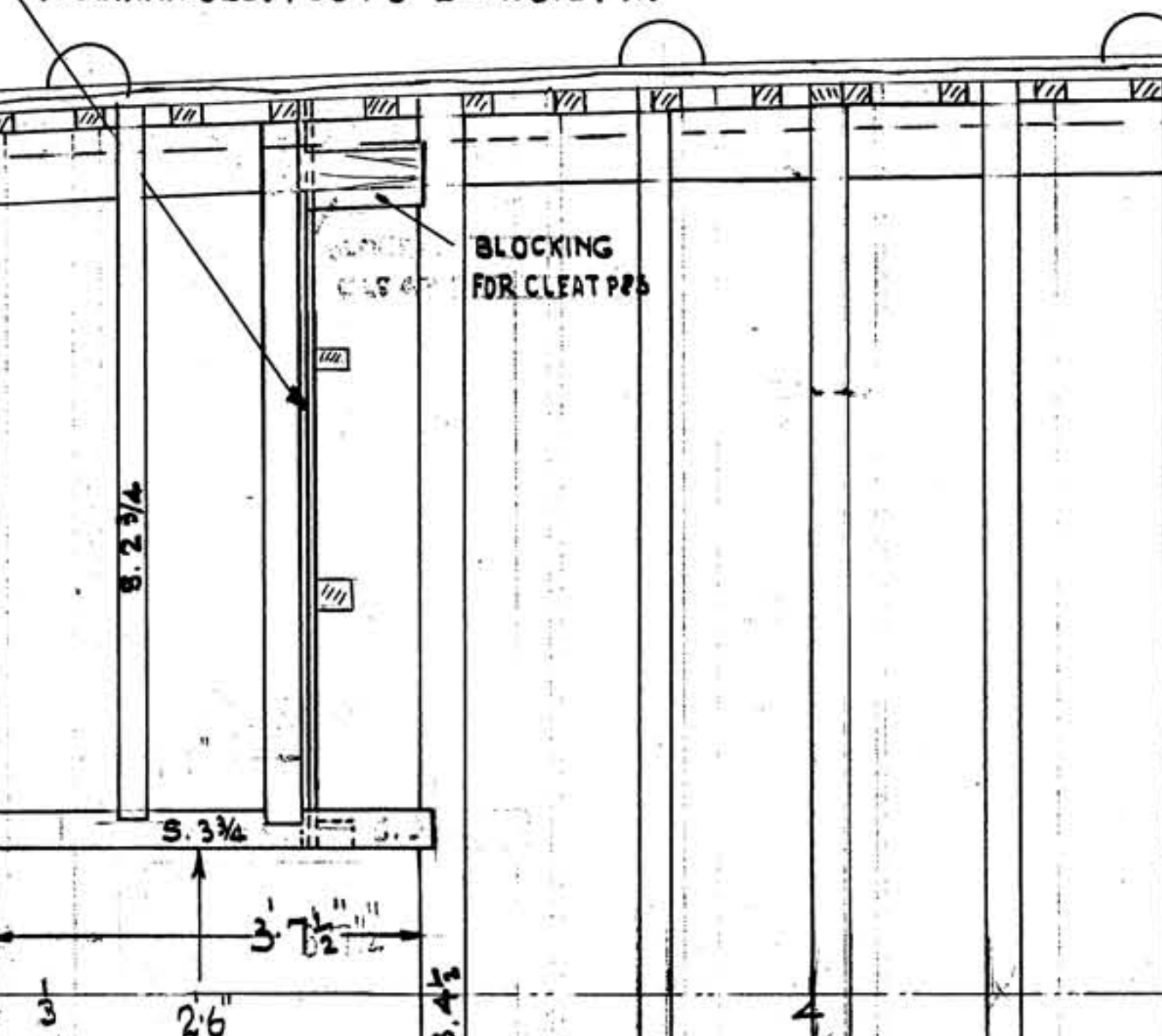
FLO
ON
WIT



DOORS 2 1/4 S X 7 1/2 M. Y. CEDAR IN E. ROOM
EVERY FRAME FASTENED TO KEEL
TH 1/2" BOLT ON ALT. FRAMES DRIFT INTERM

SHOE GUM 2 X 1 1/4
WITH 5" NAILS AB
FELT BETWEEN

BULKHEADS 2 LAYERS OF 3/4" FIR PLYWOOD,
WOLMANISED, POSTS 2 1/4 X 3 1/2 FIR



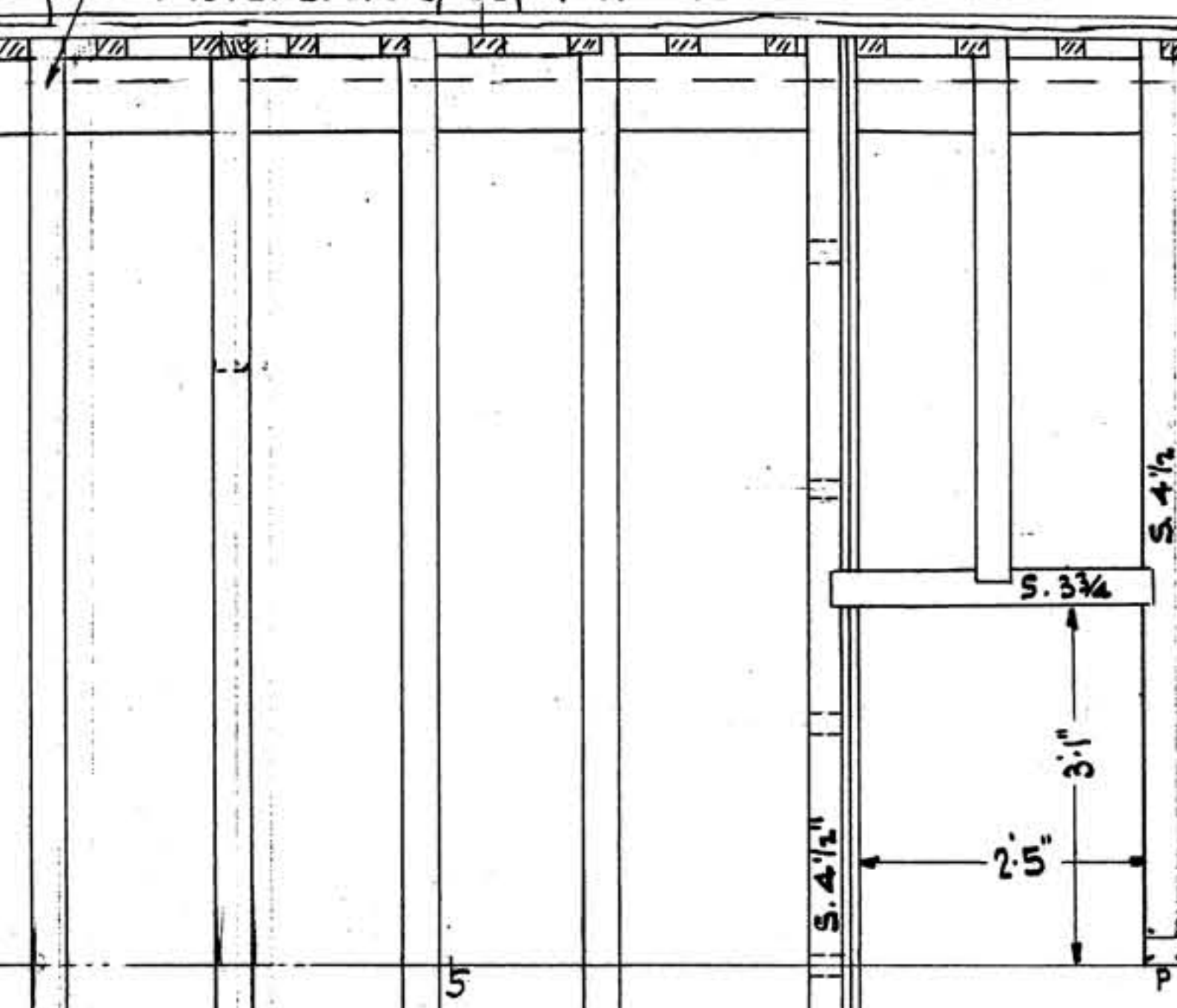
FASTENED TO KEEL
ABOUT 9" C/C. IRISH
N



KEEL S. 1 7/8 X 1 1/2 M FIR

FRAMES 2 x 3 W. OAK SPACED 9 3/4" C

BEAMS 3 1/2" S. Y. CEDAR M 3 3/4" AT C.L. TO 3 3/4" AT SHELF
SPACED AS PER PLAN. AT OPENINGS SIDED 4 1/2"
FASTENED TO SHELF WITH 1-1/2" GALV BOLT

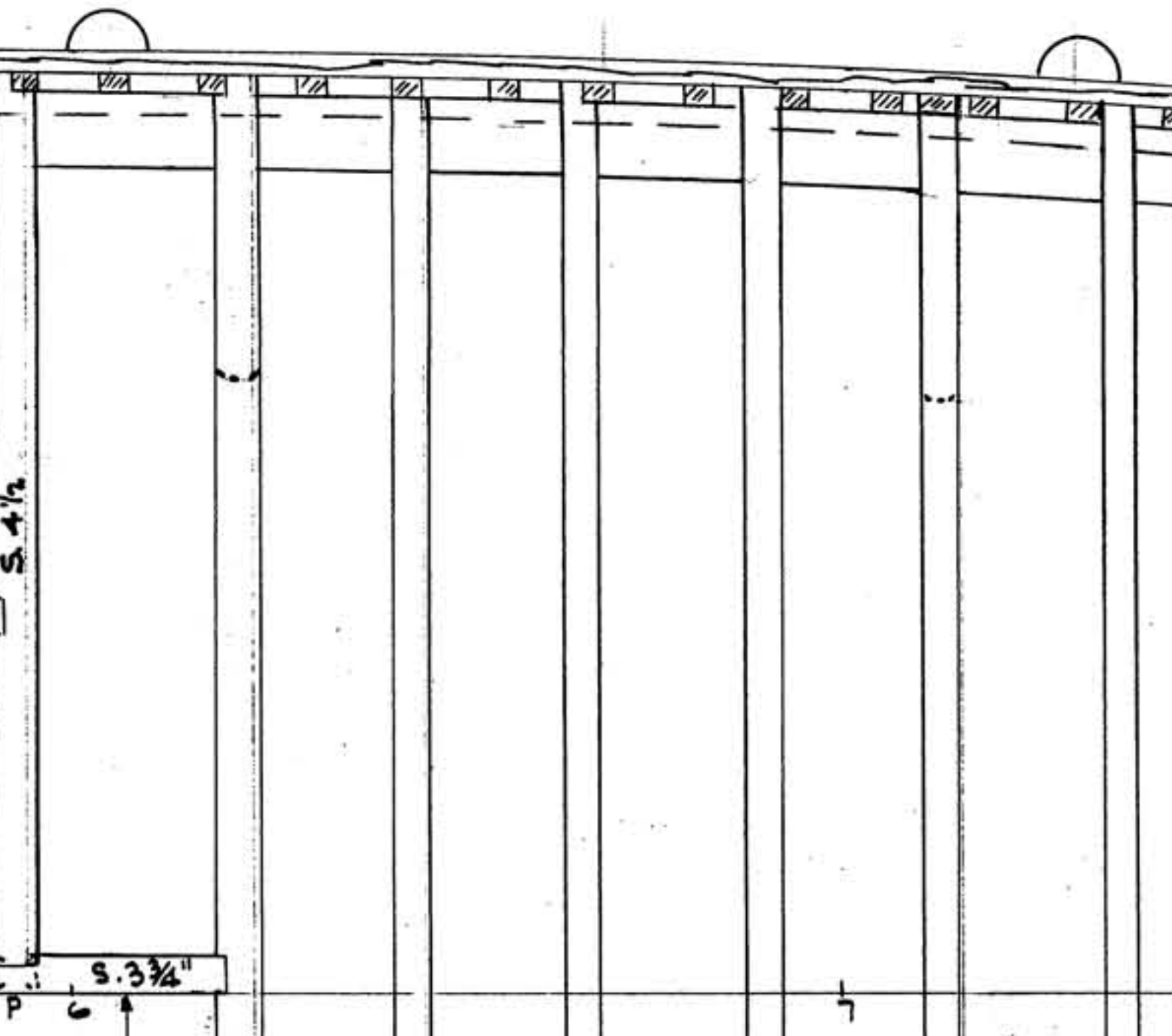


KEELSON. 6 3/4" M x 13 1/2" S. FIR

FLOORS OUTSIDE
2 1/4" S x 7 1/2" M. Y. CEDAR
THRU BOLTED TO KEELSON
EVERY 2ND MAY

C/C

LF

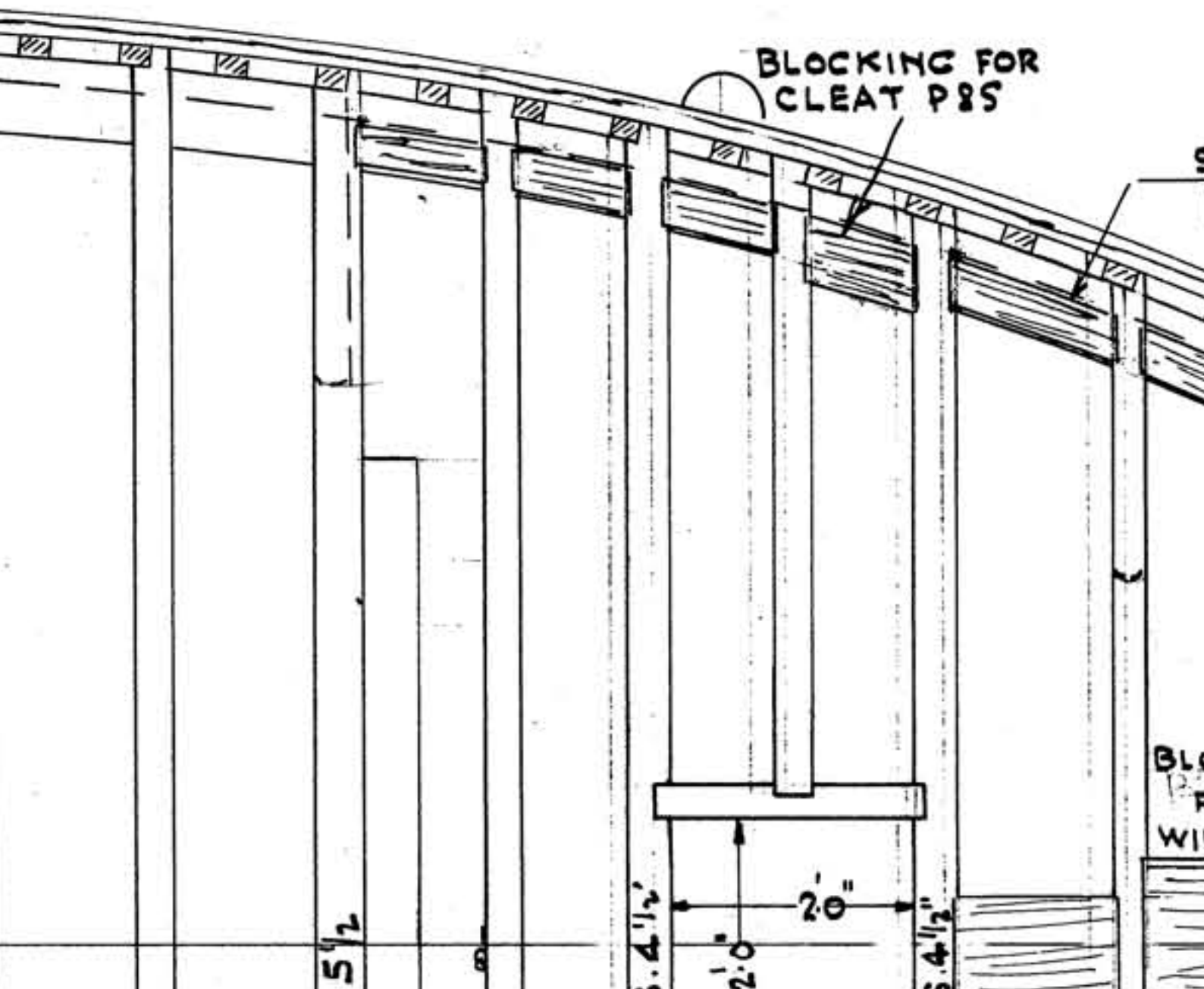


S 4 1/2"

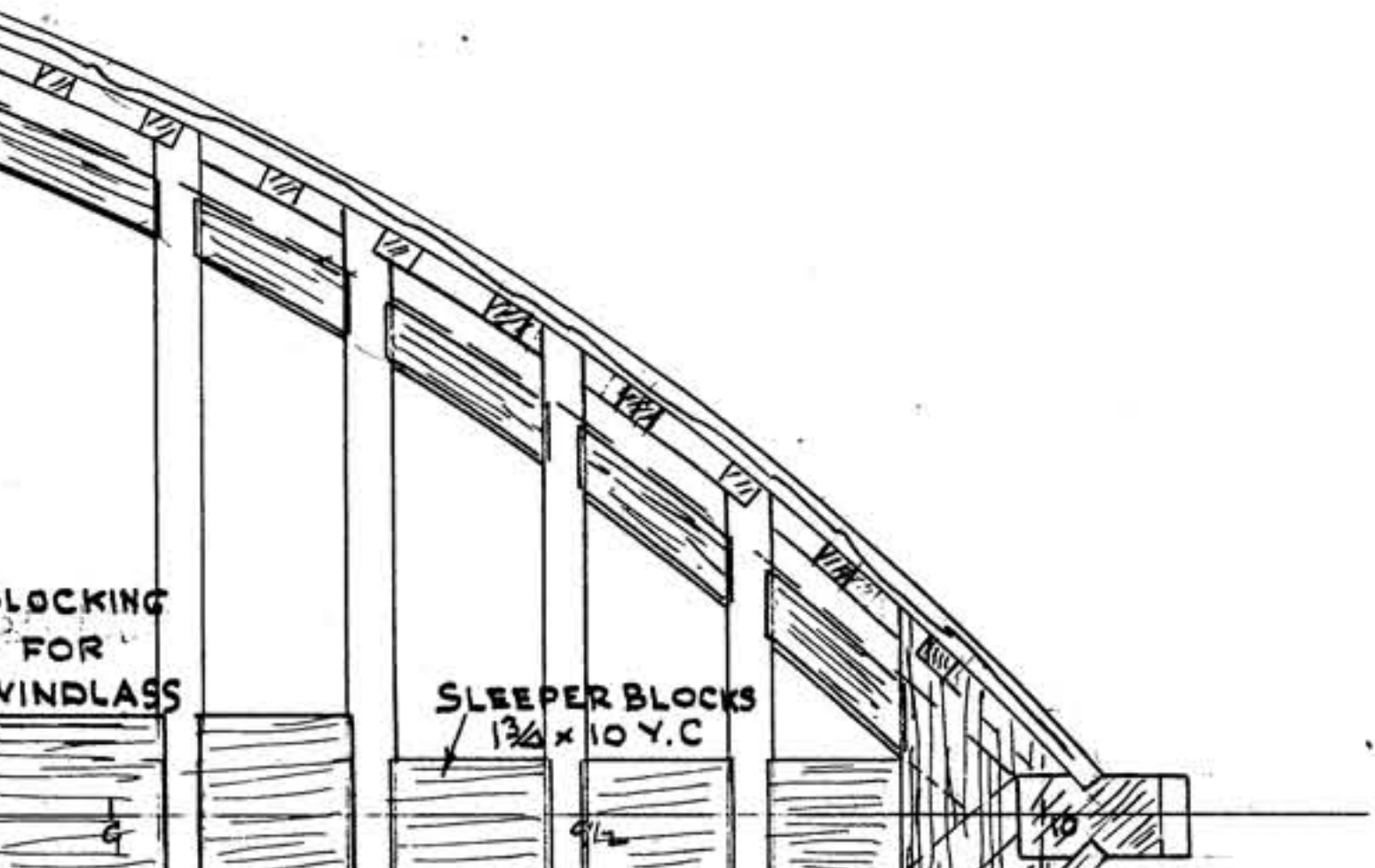
S. 3 3/4"

P 6 7

ENGINE ROOM
BAR EVERY 2ND FRAME
KEEL WITH 1/2" BOLTS STAGGERED
BY BE DRIFT



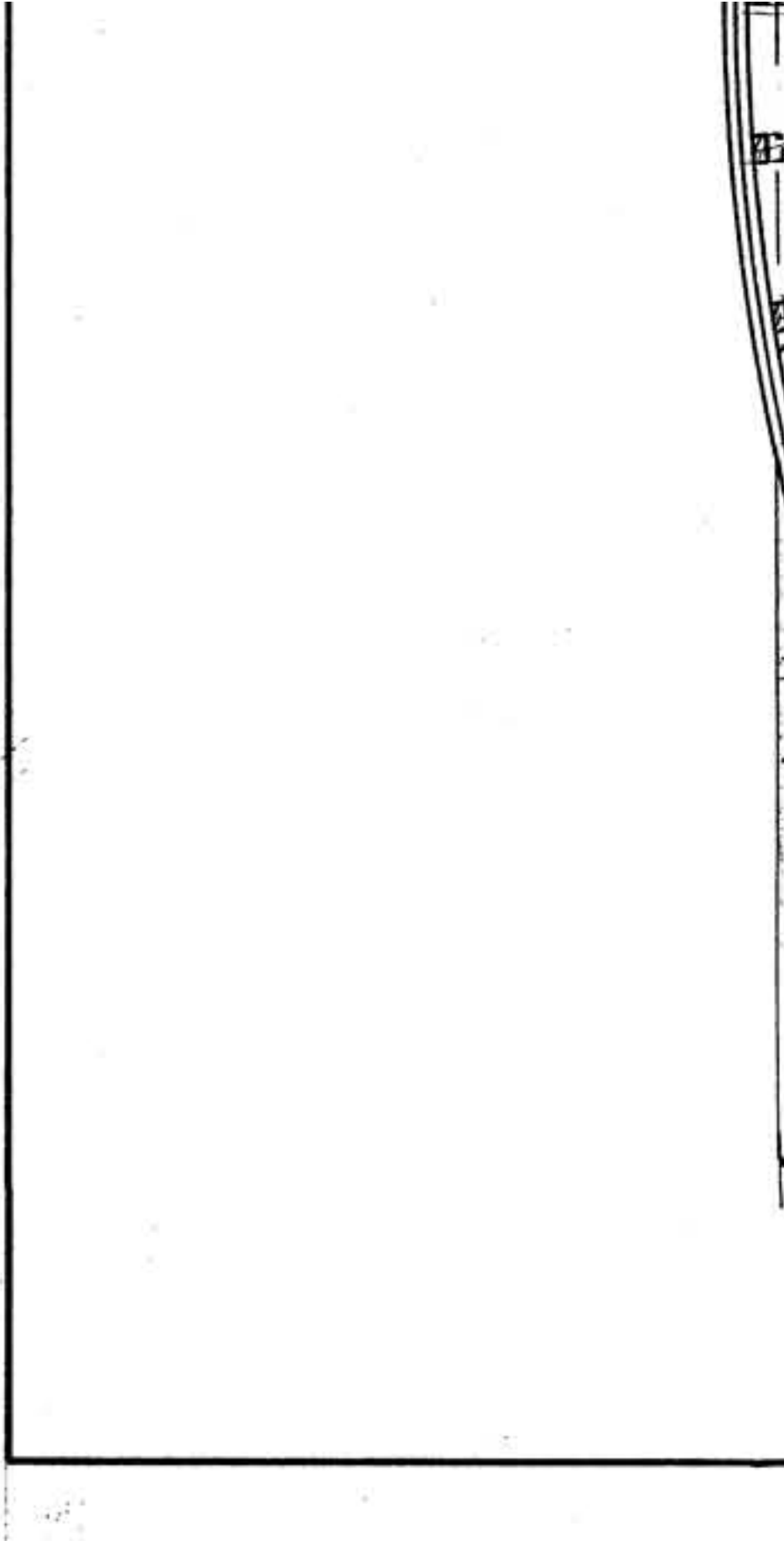
SLEEPER BLOCKS
1 3/4 x 5 Y. CEDAR

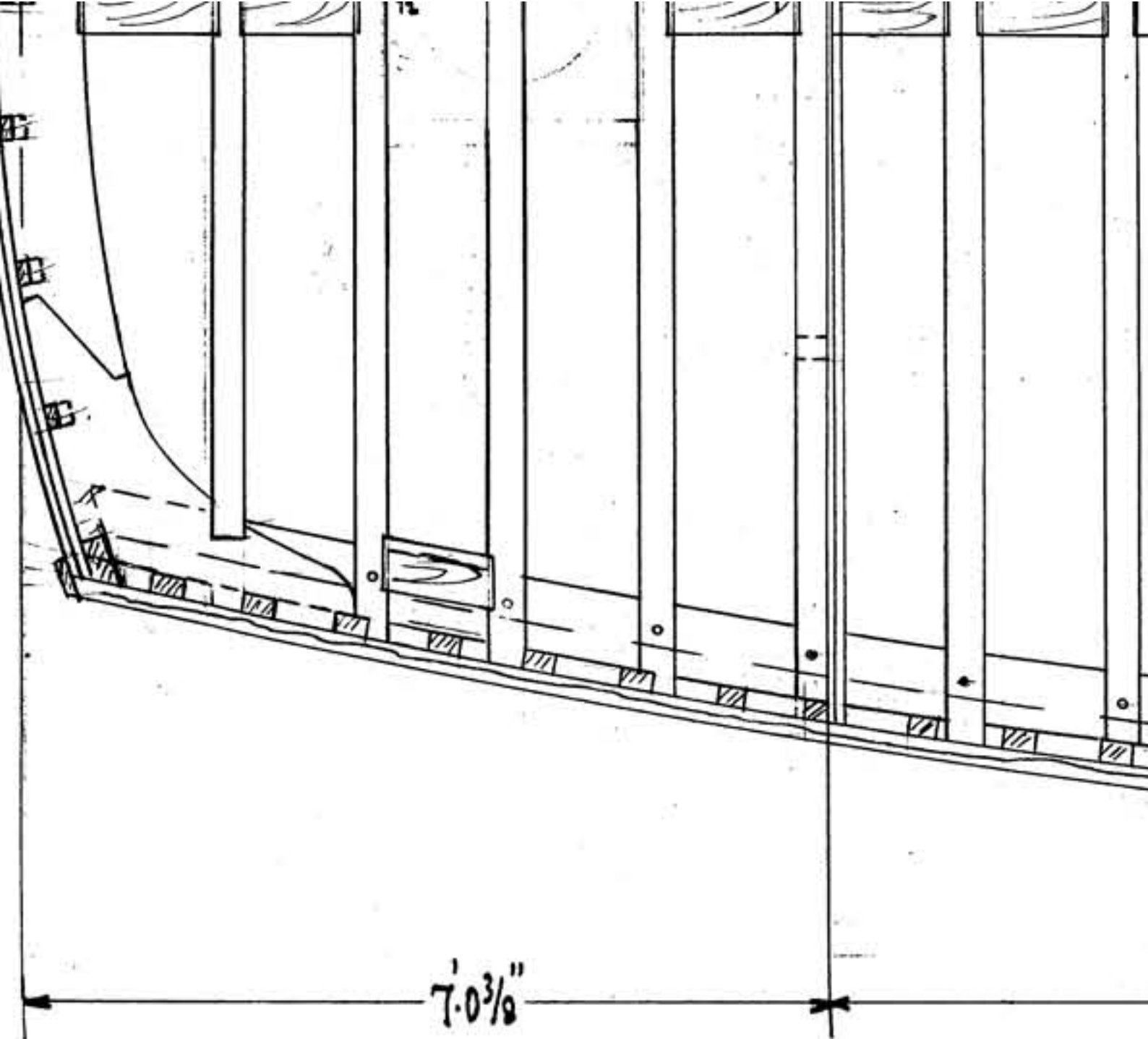


COLUMBIA MISSION

66'-5" X 16'-0"

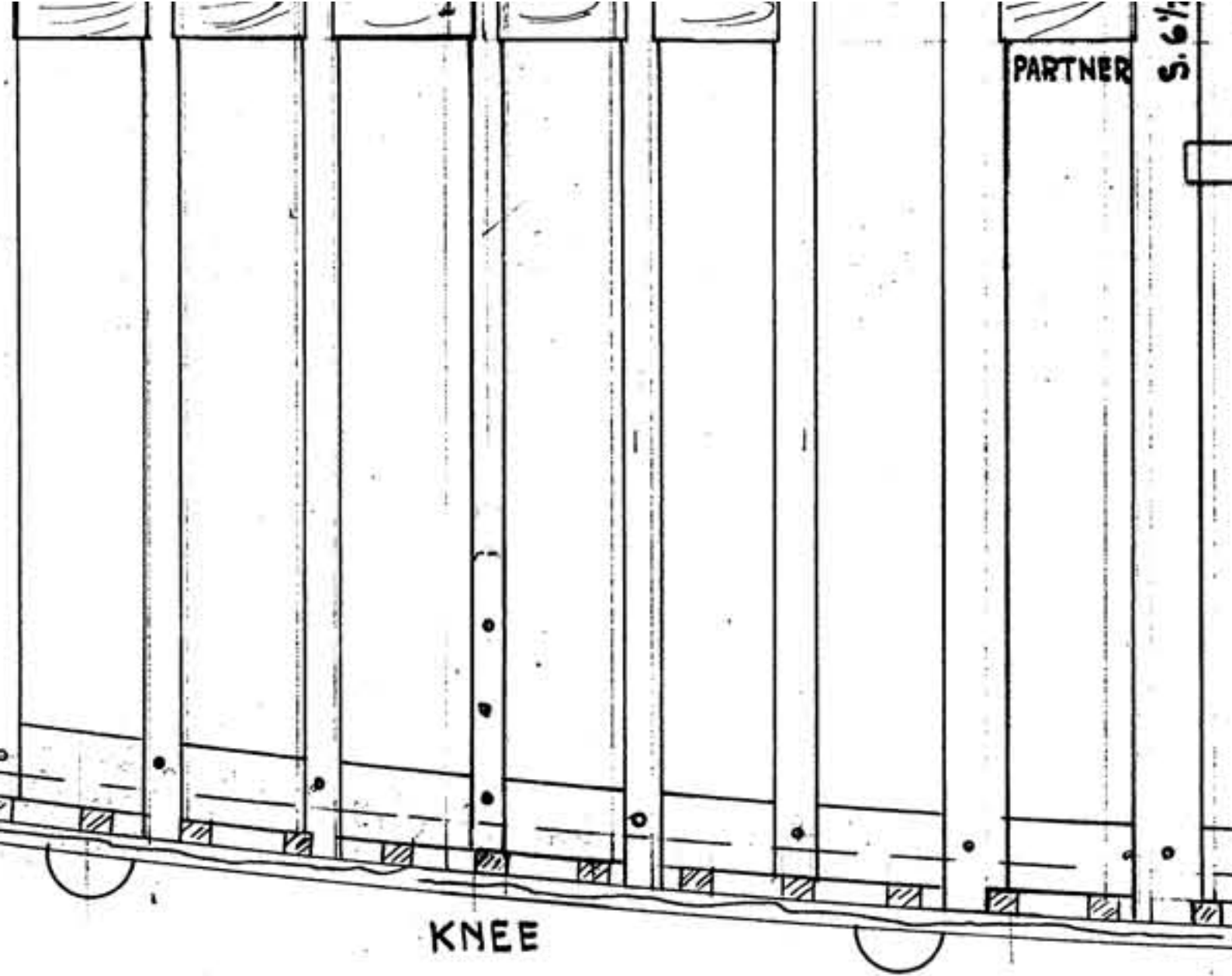
BOAT





PARTNER

S. 6 1/2



KNEE

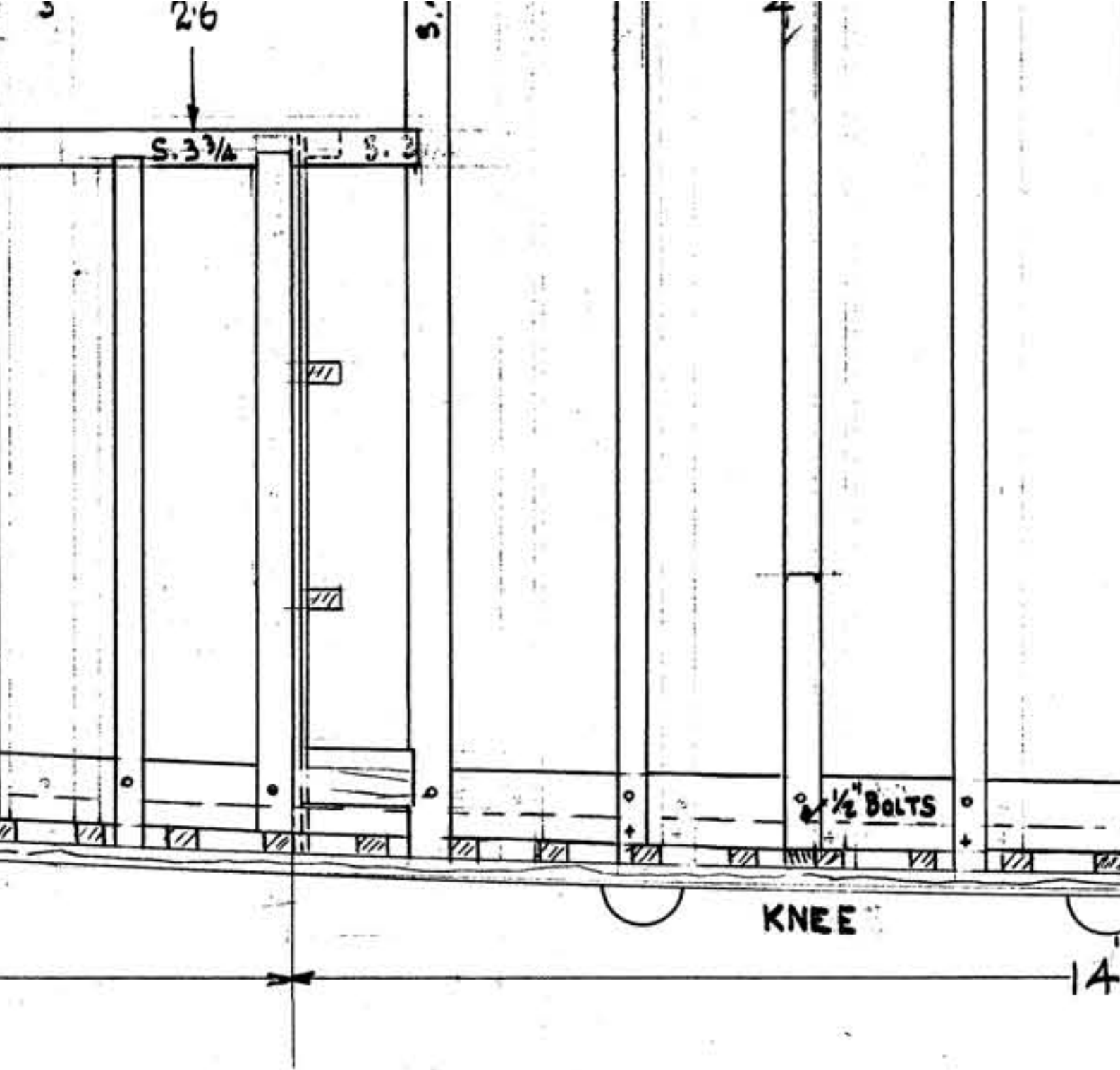
14' 7 1/2"

26

S.

S. 3 3/4

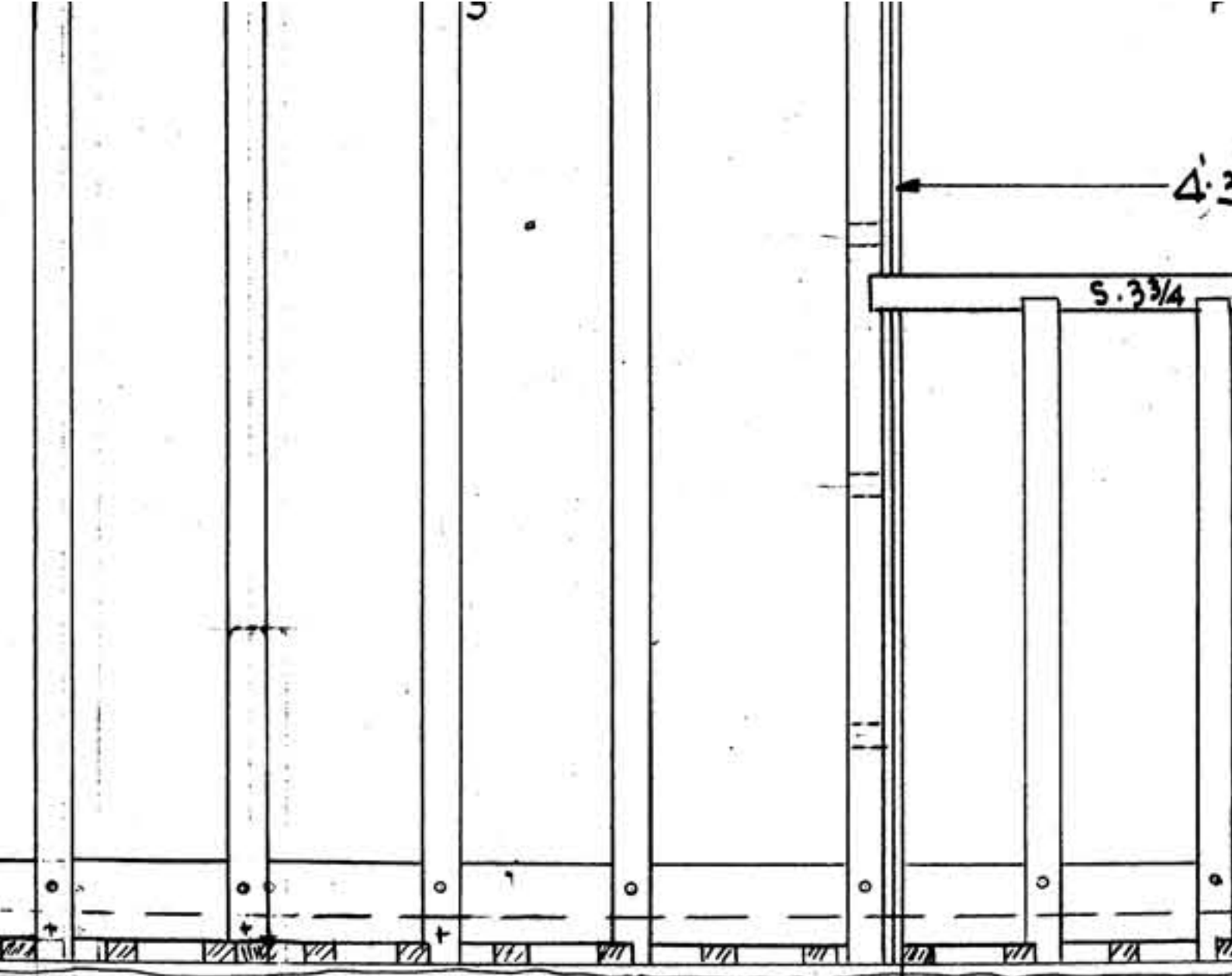
S. 2



1/2" BOLTS

KNEE

14

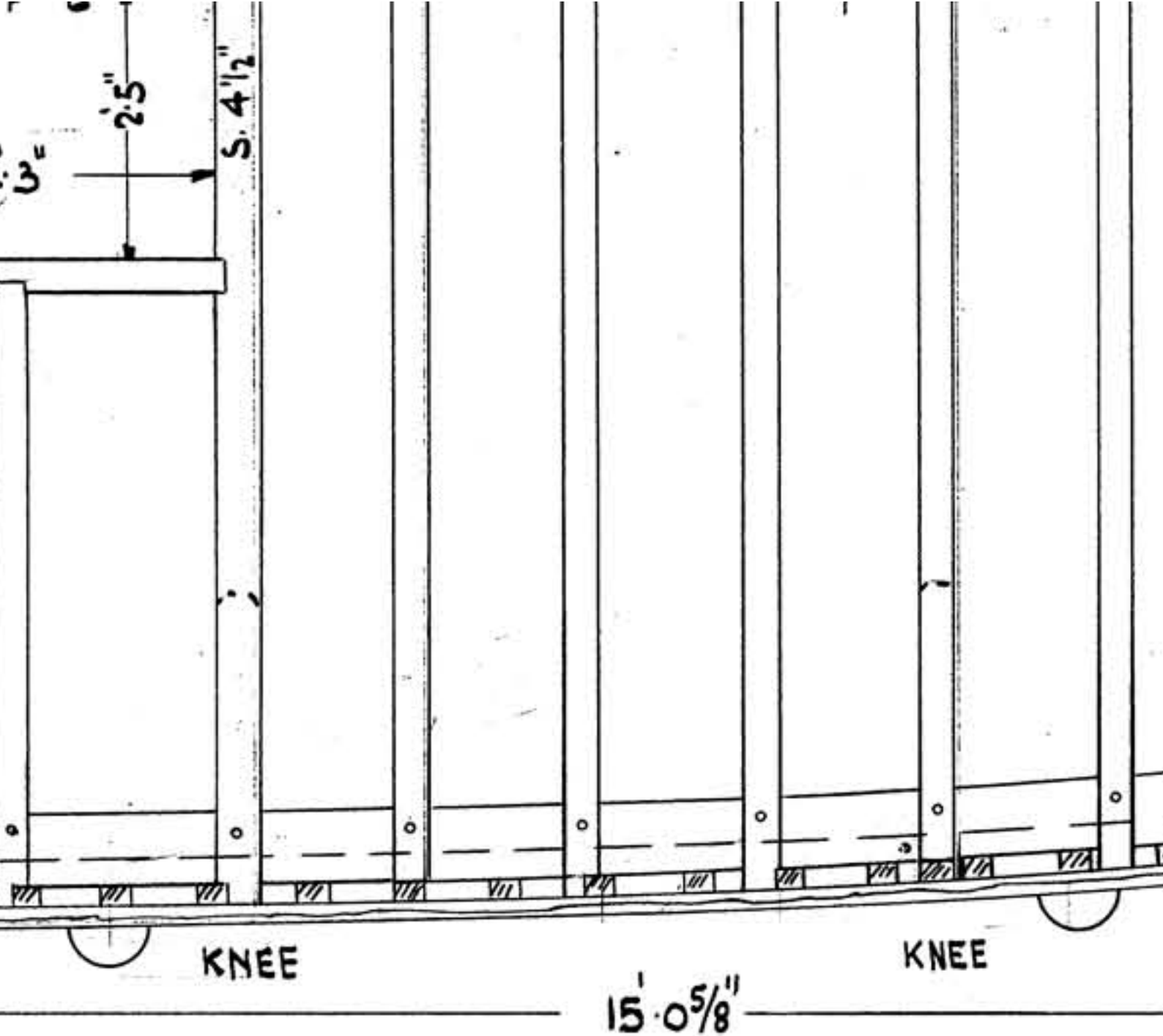


KNEE

$4'4\frac{1}{2}"$

$4'3"$

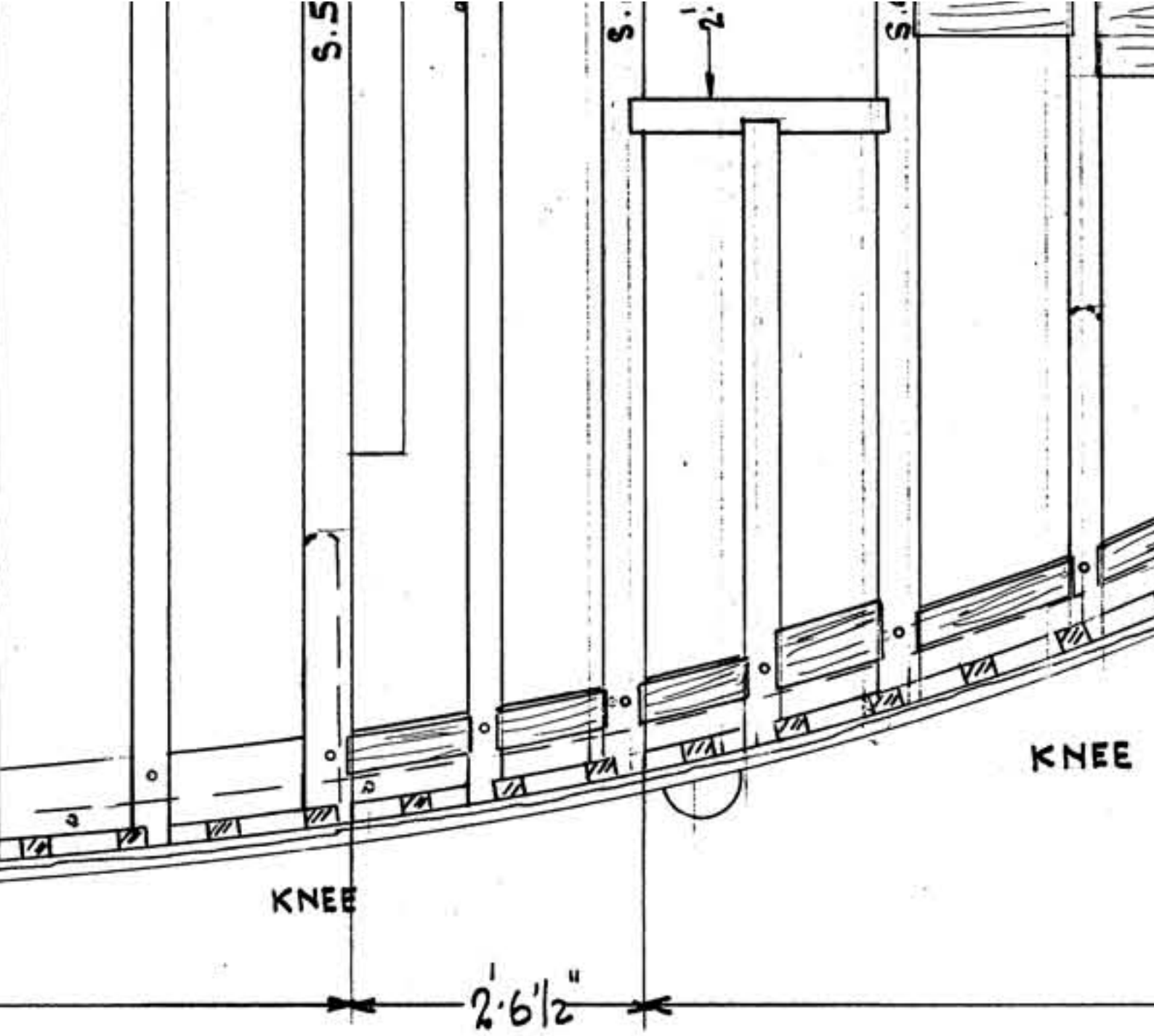
$5.3\frac{3}{4}$

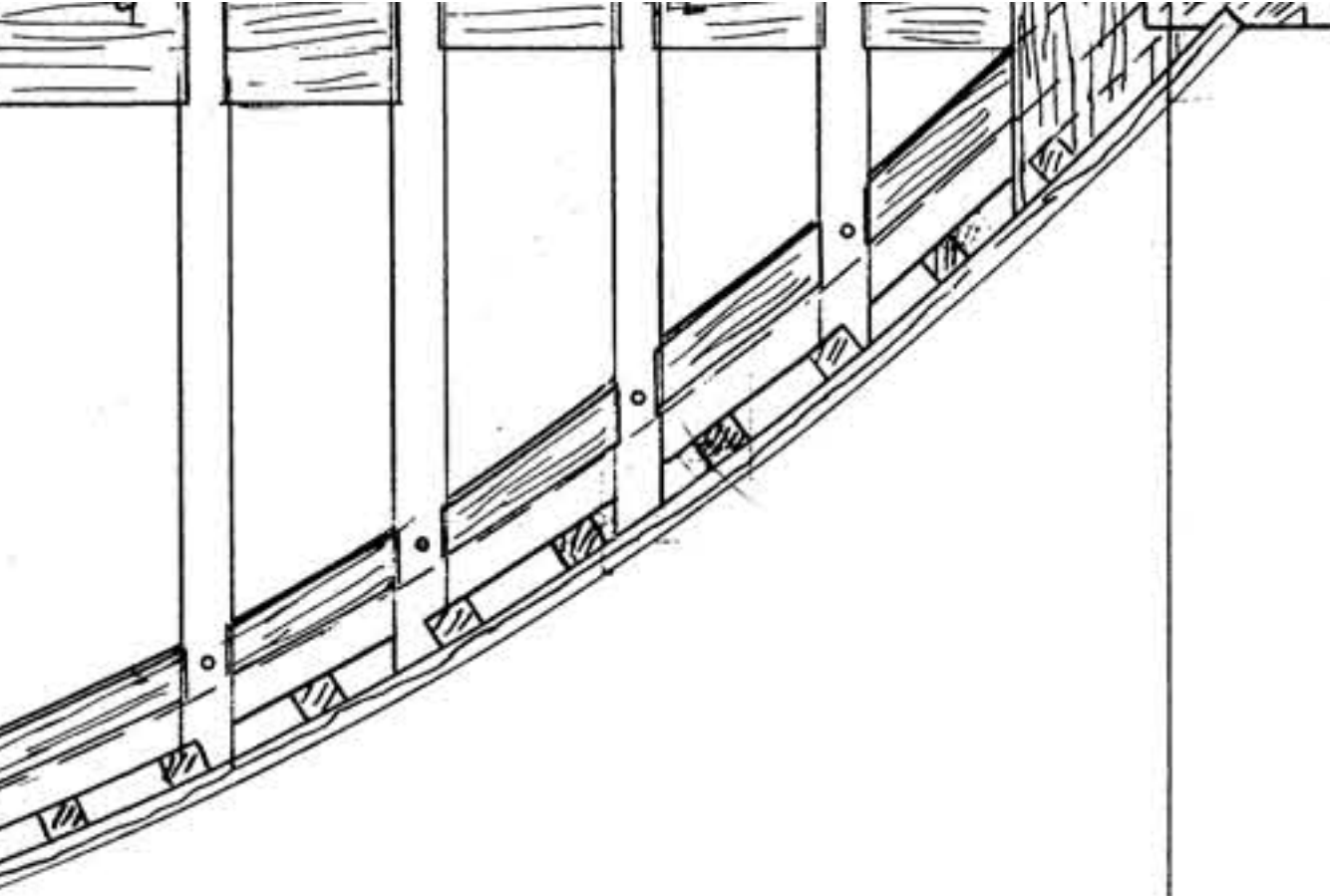


KNEE

$15'0\frac{5}{8}''$

KNEE





11'4 1/2"

66'-5" X 16'-0"

FRAMING PLAN

$\frac{1}{2}'' = 1 \text{ FT.}$

ROBERT ALLAN BSC.
NAVAL ARCHITECT
VANCOUVER, B.C.

SEPT 12, 1955

DWG. NO. 1

AS ISSUED FOR CONSTRUCTION

0.3-55-6

ION DEC. 15, 1951.