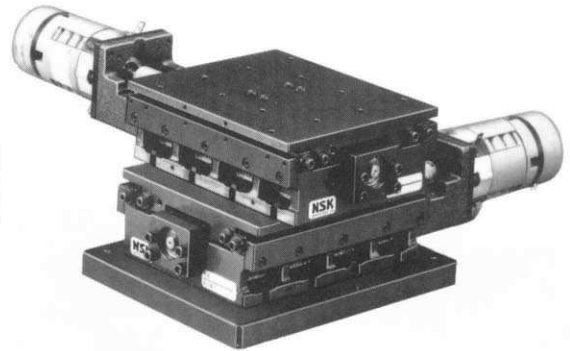
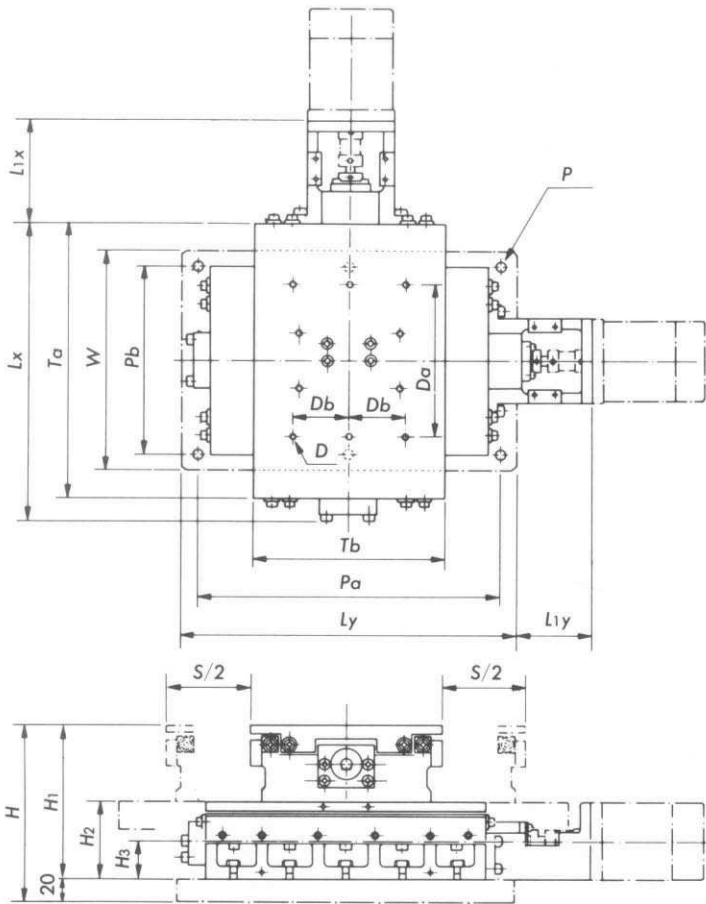


1.9.4 XY Table MODEL CD (Precision)



Dimensions

unit : mm

Model number	Travel S(Upper X Lower)	Length				Width		Height			Mounting holes			Table sizes and tapped holes				Mass (kg)
		Lx	L _{1,x}	Ly	L _{1,y}	W	H	H ₁	H ₂	H ₃	P	Pa	Pb	Ta	Tb	D	Da ^{Db} pitch	
	X Y																	
XY-CD0505-1 ※ ※	50X50	156	88	170	75.5	160	146	126	63	30	4-M8	150	140	125	125	4-M6X1	103 52.5	18
XY-CD1010-1 ※ ※	100X100	221	95	250	70	200	160	140	70	35	4-M8	220	170	200	170	8-M6X1	138 50	38
XY-CS1515-1 ※ ※	150X150	271	95	300	70	200	160	140	70	35	4-M8	270	170	250	170	6-M6X1	138 50	43
XY-CD2020-1 ※ ※	200X200	371	120	400	95	250	160	140	70	35	4-M8	370	220	350	220	10-M6X1	188 50	74
XY-CD2525-1 ※ ※	250X250	421	150	450	125	250	160	140	70	35	4-M8	420	220	400	220	8-M6X1	188 50	82

※ ※ indicates ball screw lead(Lead No.). The Lead is following.

Specifications

unit : mm

Model number	Re-peatability	Positioning accuracy	Back-lash	Str.and flat.A	Ortho.of XY motion
XY-CD0505-1 ※ ※	±0.002	0.005	0.001	0.008	0.005
XY-CD1010-1 ※ ※		0.010		0.012	
XY-CD1515-1 ※ ※	±0.003	0.010	0.020	0.025	0.025
XY-CD2020-1 ※ ※		0.015			
XY-CD2025-1 ※ ※		0.020			

BS Lead Table

Travel S	lbs Lead and Inertia Jx10 ⁻⁴ (kg · m ²)						Starting torque (N·m)	Specified accuracy load(kg)
	Lead/Lead No.	Upper table Jx10 ⁻⁴	Lower table Jx10 ⁻⁴	Lead/Lead No.	Upper table Jx10 ⁻⁴	Lower table Jx10 ⁻⁴		
50	5/40 (**)	0.043	0.080	4/41 (**)	0.035	0.060	MAX	16
100		0.108	0.195		0.073	0.588		15
150	10/42 (**)	0.135	0.240	10/42 (**)	0.288	0.700	0.7	16
200		0.208	0.385		0.418	0.993		23
250		0.240	0.438		0.545	1.335		26

- Notes:1.Stepping motors (2 or 5 phases),DC servo-motors and drivers,as well as various controllers are also available.
- 2.Optical sensors and limit switches can be provided for OT(over travel)control and designation of the system origin.
- 3.The listed values of inertia and starting torque are for the case of no load and no drive motor.
- 4.The 20cm thick plate is option.

The appearance and specifications may be changed without prior notice if required to improve performance.