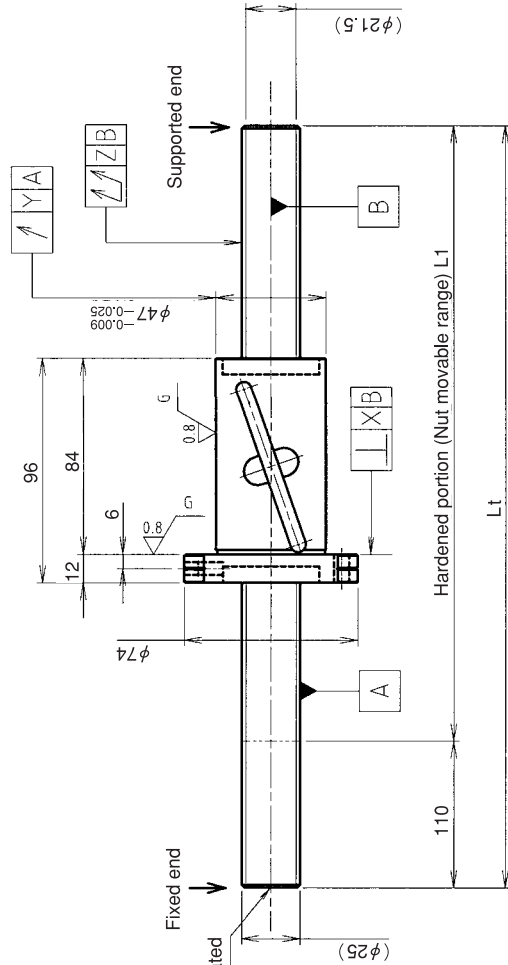
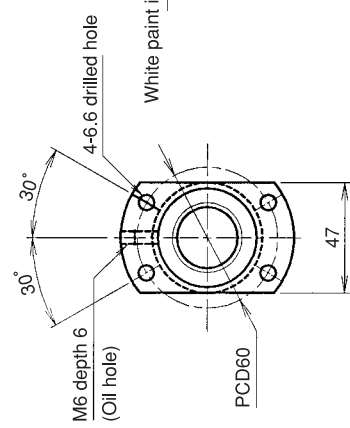


UNFINISHED SHAFT ENDS Screw shaft diameter Ø25, Lead 25(U nut)

(Unit:mm)



Ball screw specifications

Screw shaft dia.	25	Basic dynamic load rating	9300N
Lead	25	Basic static load rating	22700N
Thread direction	Right-hand	Lubricant	Alvania Grease No.2
Number of circuits	2.5turn 1circuit	Surface treatment	Without
Ball diameter	3.9688		

Model No.	Axial clearance	L _t	X	Y	Z	Wiper
GW2525DS-HULR-1000A		890			0.080	
GW2525DS-HULR-2000A	-0.050	1890	0.025	0.025	0.200	Lip seal
GW2525DS-HULR-2500A		2390			0.260	

Table of optional specifications for each model

Additional machining of shaft end	Surface treatment(1)	Difference of grease	Direction of nut	Wiper removal
○	○	○	○	○

(Note 1) The above-mentioned surface treatment is LD treatment(coating thickness:1 to 2µm).

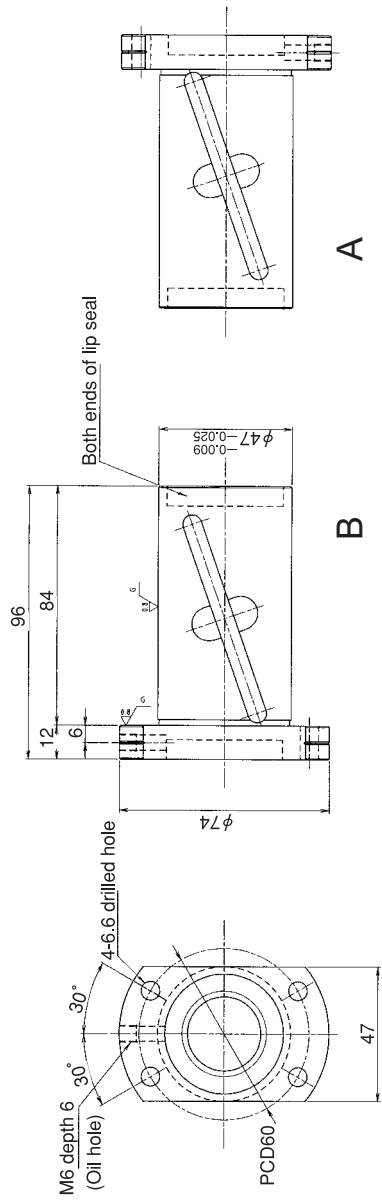
Notation of standard rolled ball screw
 •Standard length shaft without end machining
 GW2525DS-HULR-□□□□A
 •With end machining specified on your drawing
 GW2525DS-HULR-□□□□X□□□□-C7Y
 Overall length Thread length

SHAFT END FINISH ORDERING SHEET

Screw shaft diameter Ø25, Lead 25(U nut)

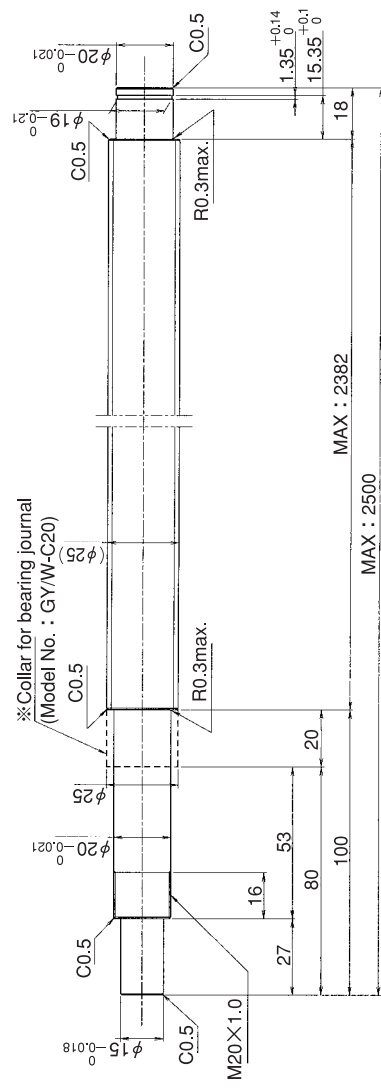
(Unit:mm)

GW2525DS-HULR- X -C7Y



A

Select the orientation of nut flange by circling A or B.
 No marking means "B" orientation as default.



*Please place an order for collar separately.
 Applicable Support Unit
 Direct mount: BUK-20A (Fixed end unit+Supported end unit) Refer to Page.429
 Circle flange: BUM-20 (Fixed end unit+Supported end bearing) Refer to Page.436

Company Name	
Telephone	Name of Person in Charge
Company Address	

Refer to page 24 for NOTATION OF MODEL NUMBER.