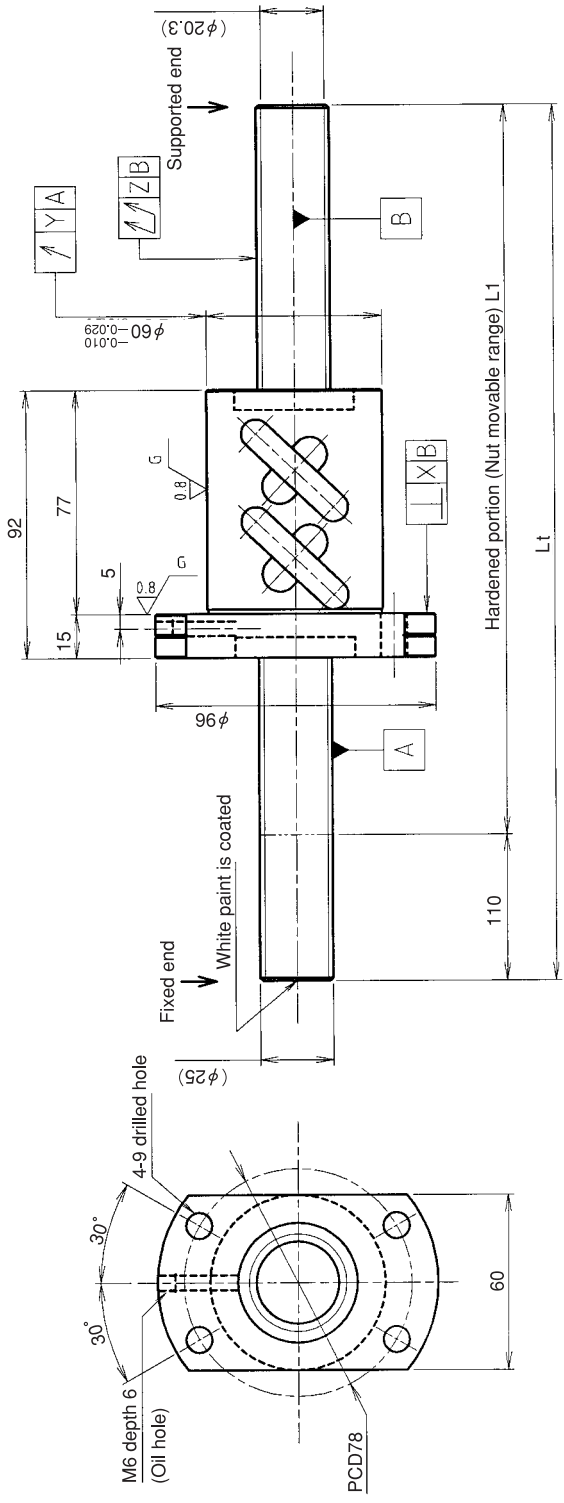


UNFINISHED SHAFT ENDS Screw shaft diameter Ø25, Lead 10(U nut)

(Unit:mm)



Ball screw specifications

Screw shaft dia.	25	Basic dynamic load rating	27500N
Lead	10	Basic static load rating	76300N
Thread direction	Right-hand	Lubricant	Alvania Grease No.2
Number of circuits	2.5turn 2circuit	Surface treatment	Without
Ball diameter	6.350		

Table of optional specifications for each model

Additional machining of shaft end	Surface treatment(1)	Difference of grease	Direction of nut	Wiper removal
O	O	O	O	O

(Note 1) The above-mentioned surface treatment is LD treatment(coating thickness:1 to 2µm).

Model No.	Axial clearance	L1	Lt	X	Y	Z	Wiper
GW2510ES-HULR-1000A		890	1000			0.080	
GW2510ES-HULR-2000A	-0.070	1890	2000	0.025	0.025	0.200	Lip seal
GW2510ES-HULR-2500A		2390	2500			0.260	

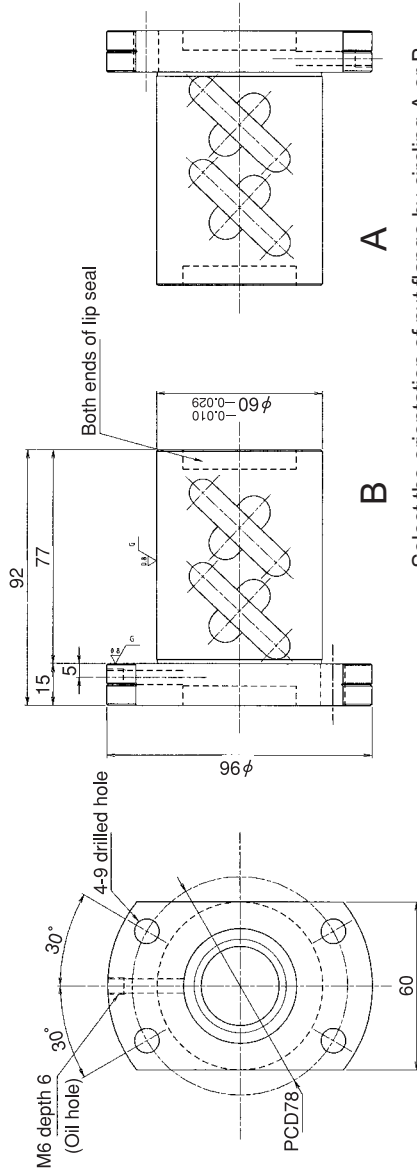
Notation of standard rolled ball screw
 •Standard length shaft without end machining
 GW2510ES-HULR-□□□□A
 •With end machining specified on your drawing
 GW2510ES-HULR-□□□□X□□□□-C7Y
 Overall length Thread length

SHAFT END FINISH ORDERING SHEET

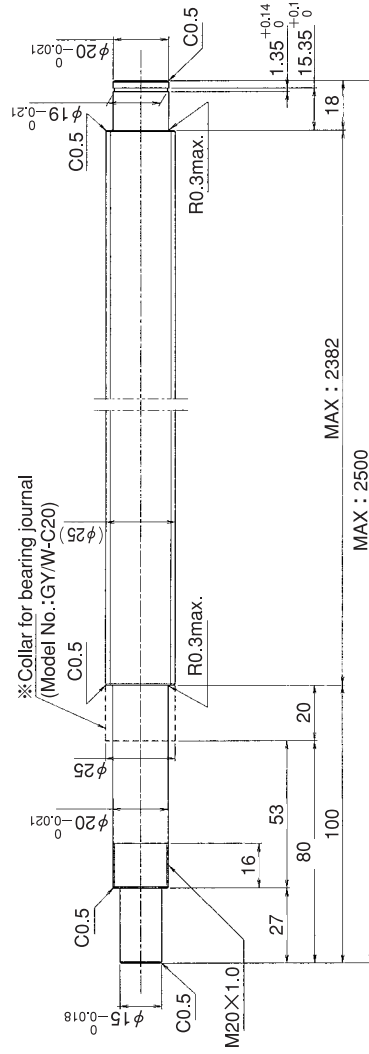
Screw shaft diameter Ø25, Lead 10(U nut)

(Unit:mm)

GW2510ES-HULR- X -C7Y



Select the orientation of nut flange by circling A or B.
No marking means "B" orientation as default.



*Please place an order for collar separately.

Applicable Support Unit

Direct mount:BUK-20A(Fixed end unit+Supported end unit) Refer to Page.429

Circle flange:BUM-20(Fixed end unit+Supported end bearing) Refer to Page.436

Company Name	
Telephone	Name of Person in Charge
Company Address	

Refer to page 24 for NOTATION OF MODEL NUMBER.

