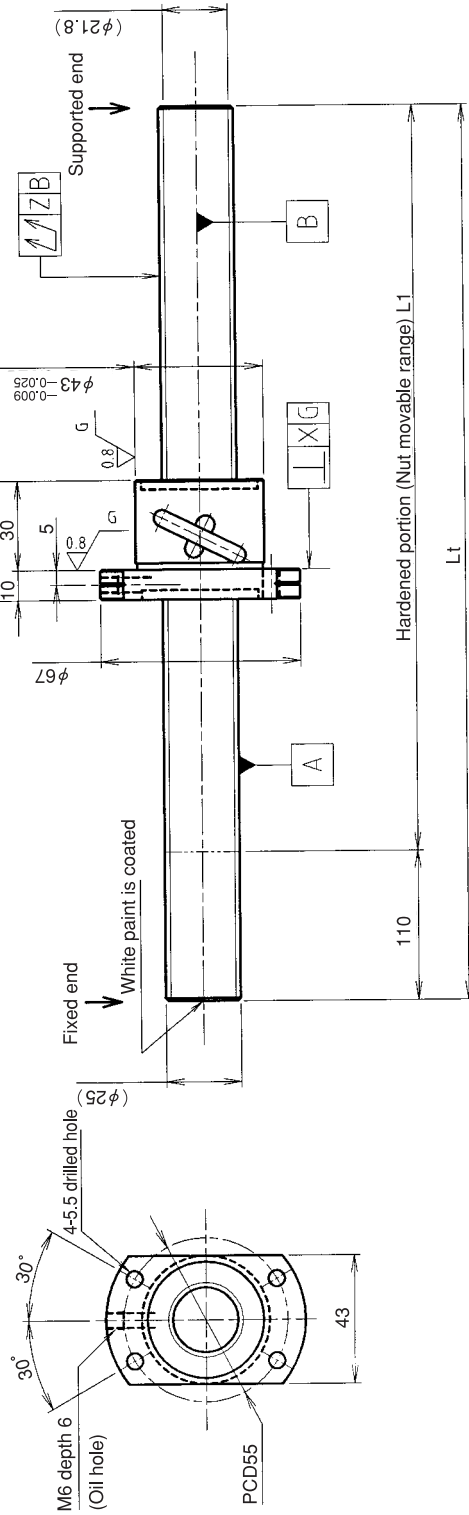


UNFINISHED SHAFT ENDS Screw shaft diameter Ø25, Lead 5(U nut)

(Unit:mm)



Ball screw specifications

Screw shaft dia.	25	Basic dynamic load rating	6600N
Lead	5	Basic static load rating	18700N
Thread direction	Right-hand	Lubricant	Alvania Grease No.2
Number of circuits	2.5turn 1circuit	Surface treatment	Without
Ball diameter	3.175		

Model No.	Axial clearance	L ₁	L _t	X	Y	Z	Wiper
GW2505DS-HULR-1000A	-0.030	890	1000	0.025	0.025	0.080	Lip seal
GW2505DS-HULR-2000A		1890	2000			0.200	
GW2505DS-HULR-2500A		2390	2500			0.260	

Table of optional specifications for each model

Additional machining of shaft end	Surface treatment(Notes 1)	Difference of grease	Direction of nut	Wiper removal
○	○	○	○	○

(Note 1) The above-mentioned surface treatment is LD treatment(coating thickness:1 to 2µm).

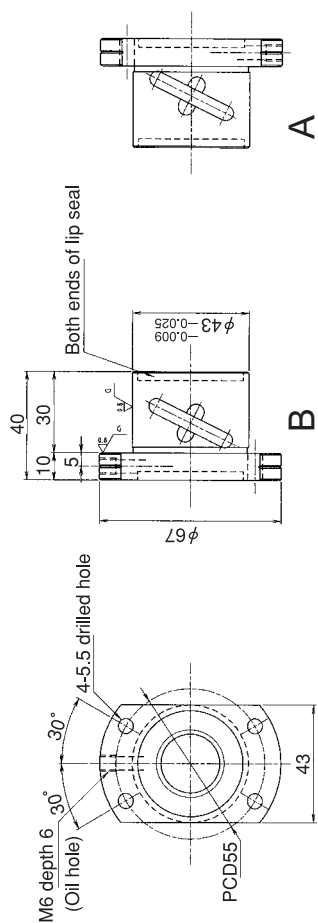
Notation of standard rolled ball screw
 •Standard length shaft without end machining
 GW2505DS-HULR-□□□□A
 •With end machining specified on your drawing
 GW2505DS-HULR-□□□□X□□□□-C7Y
 Overall length Thread length

SHAFT END FINISH ORDERING SHEET

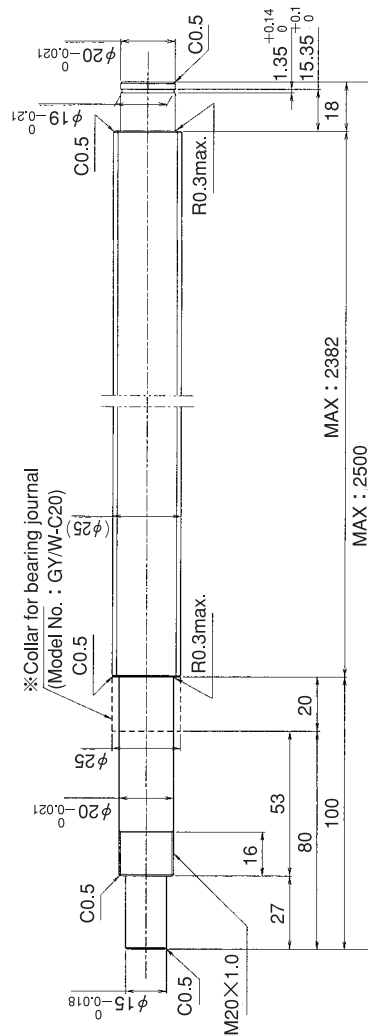
Screw shaft diameter Ø25, Lead 5(U nut)

(Unit:mm)

GW2505DS-HULR- X -C7Y



Select the orientation of nut flange by circling A or B.
No marking means "B" orientation as default.



*Please place an order for collar separately.

Applicable Support Unit

Direct mount:BUK-20A(Fixed end unit+Supported end unit) Refer to Page.429

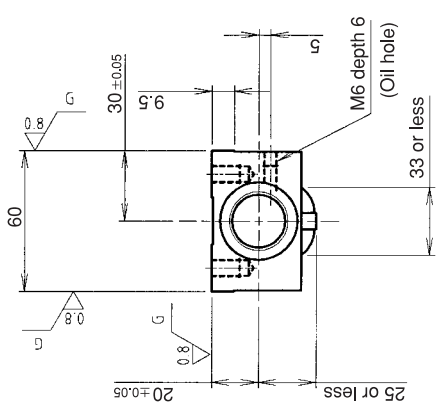
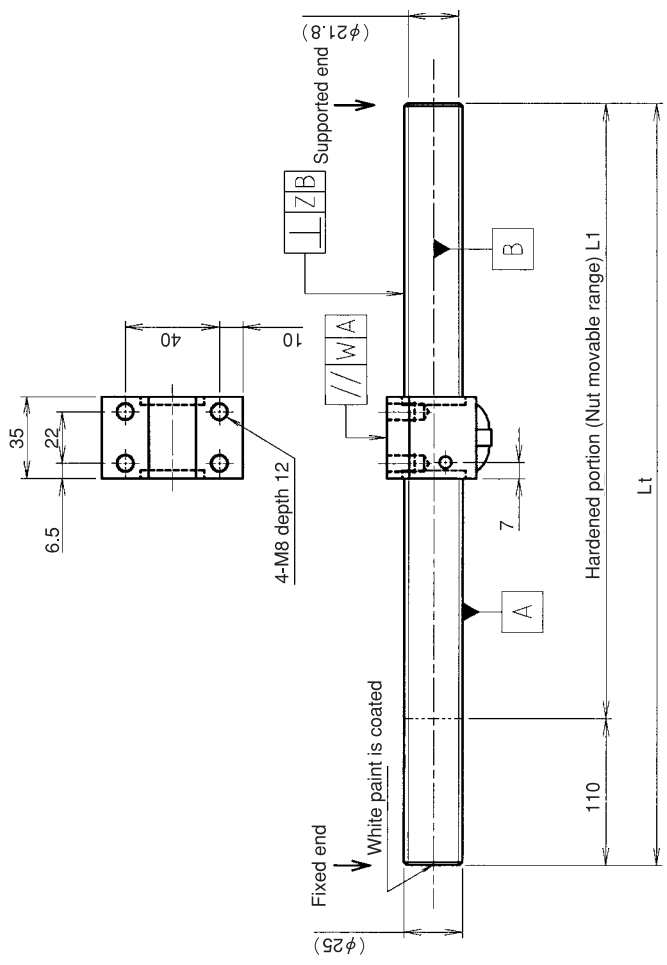
Circle flange:BUM-20(Fixed end unit+Supported end bearing) Refer to Page.436

Company Name	
Telephone	Name of Person in Charge
Company Address	

UNFINISHED SHAFT ENDS

Screw shaft diameter Ø25, Lead 5(K nut)

(Unit:mm)



Ball screw specifications

Screw shaft dia.	25	Basic dynamic load rating	6600N
Lead	5	Basic static load rating	18700N
Thread direction	Right-hand	Lubricant	Alvania Grease No.2
Number of circuits	2.5turn 1circuit	Surface treatment	Phosphate coating (Nut only)
Ball diameter	3.175		

Model No.	Axial clearance	L ₁	L _t	W	Z	Wiper
GW2505DS-NKLR-1000A		890	1000		0.080	
GW2505DS-NKLR-2000A	-0.030	1890	2000	0.017	0.200	Lip seal
GW2505DS-NKLR-2500A		2390	2500		0.260	

Table of optional specifications for each model

Additional machining of shaft end	Surface treatment(Note 1)	Difference of grease	Direction of nut removal	Wiper removal
○	○	○	○	○

(Note 1) The above-mentioned surface treatment is LD treatment(coating thickness:1 to 2µm).

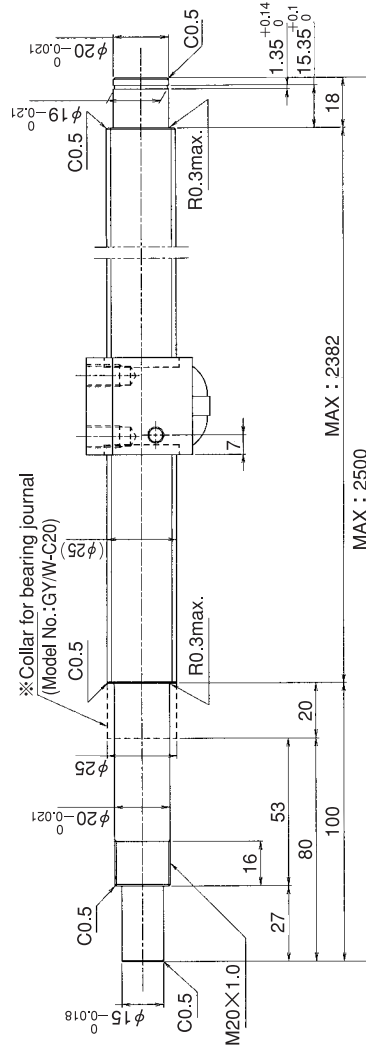
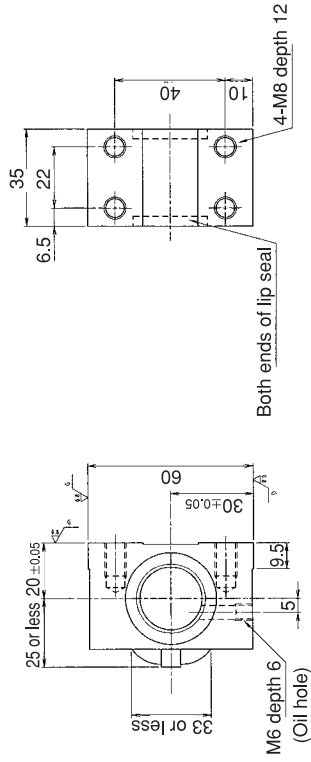
Notation of standard rolled ball screw
 •Standard length shaft without end machining
 GW2505DS-NKLR-□□□□A
 •With end machining specified on your drawing
 GW2505DS-NKLR-□□□□X□□□□-C7Y
 Overall length Thread length

SHAFT END FINISH ORDERING SHEET

Screw shaft diameter Ø25, Lead 5(K nut)

(Unit:mm)

GW2505DS-NKLR- X -C7Y



*Please place an order for collar separately.

Applicable Support Unit

Direct mount:BUK-20A(Fixed end unit+Supported end unit) Refer to Page.429

Circle flange:BUM-20(Fixed end unit+Supported end bearing) Refer to Page.436

Company Name		
Telephone		
Company Address		
	Name of Person in Charge	

Refer to page 24 for NOTATION OF MODEL NUMBER.