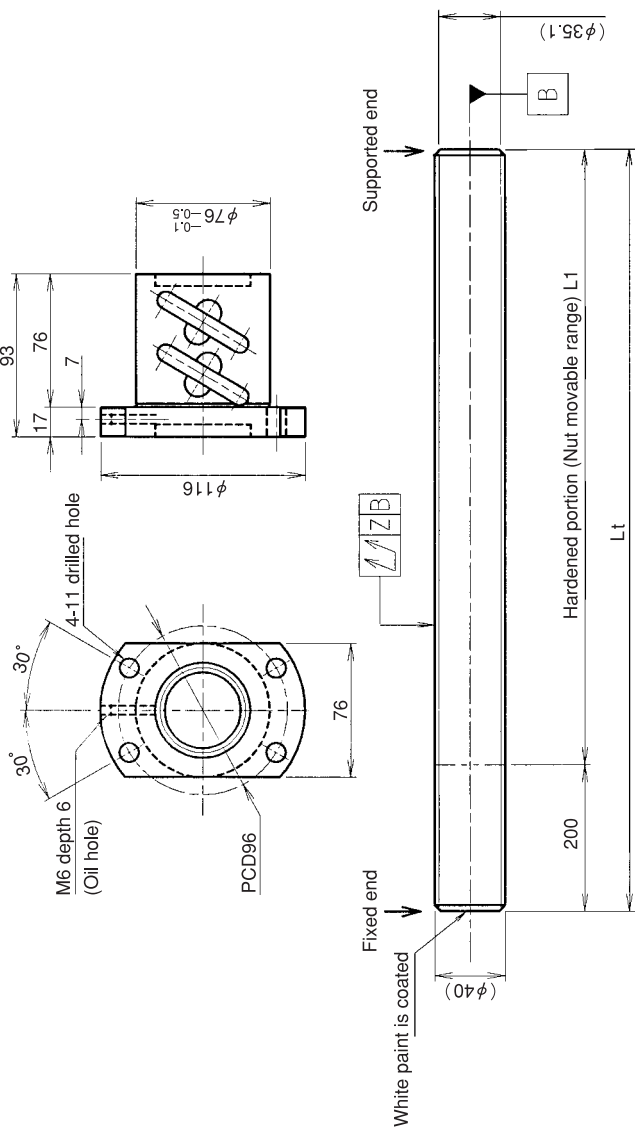


KURODA Standard Rolled Ball Screw:GY Series(Accuracy grade C10)

UNFINISHED SHAFT ENDS Screw shaft diameter Ø40, Lead 10(U nut)

(Unit:mm)



Ball screw specifications

Screw shaft dia.	40	Basic dynamic load rating	37100N
Lead	10	Basic static load rating	105600N
Thread direction	Right-hand	Lubricant	Alvania Grease No.2
Number of circuits	2.5turn 2circuit	Surface treatment	Phosphate coating
Ball diameter	6.350		

Model No.	Axial clearance	L1	Lt	Z	Wiper
GY4010ES-HUBR-2000A		1800	2000	0.240	
GY4010ES-HUBR-3000A	-0.200	2800	3000	0.400	Brush wiper
GY4010ES-HUBR-4000A		3800	4000	0.640	

Table of optional specifications for each model

Additional machining of shaft end	Surface treatment(No.1)	Difference of grease	Direction of nut	Wiper removal
O	O	O	O	O

(Note 1) The above-mentioned surface treatment is LD treatment(coating thickness:1 to 2µm).

Notation of standard rolled ball screw

- Standard length shaft without end machining(Matched screw shaft and nut)
GY4010ES-HUBR-□□□□A
- Nut only without screw shaft
GY4010ES-HUBR
- Screw shaft only without end machining
GY4010ZZ-ZZZZ-□□□□D

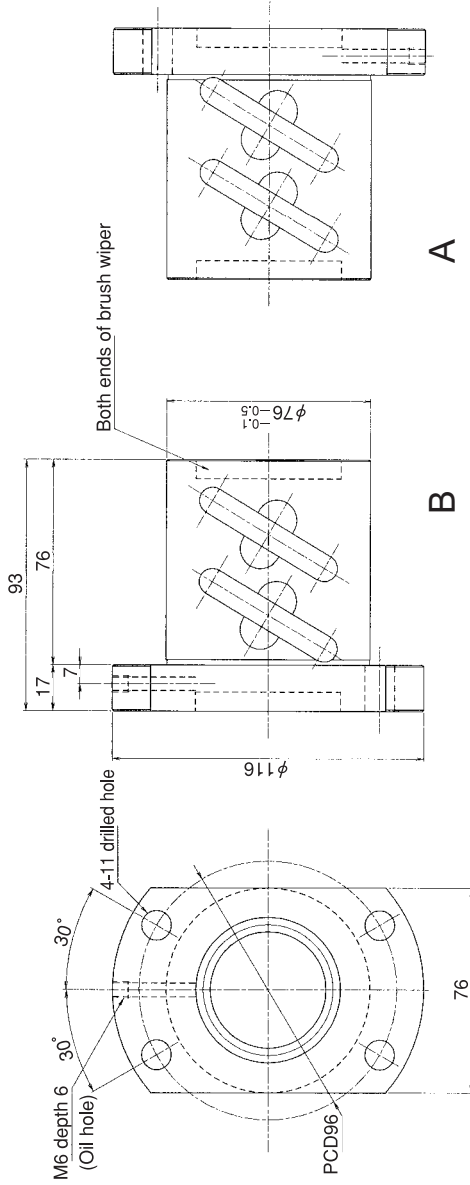
- With end machining specified on your drawing(Matched screw shaft and nut)
GY4010ES-HUBR-□□□□X□□□□-CAY
 - With end machining specified on your drawing (Screw shaft only)
GY4010ZZ-ZZZZ-□□□□Y□□□□-CAY
- Overall length Thread length

SHAFT END FINISH ORDERING SHEET

Screw shaft diameter Ø40, Lead 10(U nut)

(Unit:mm)

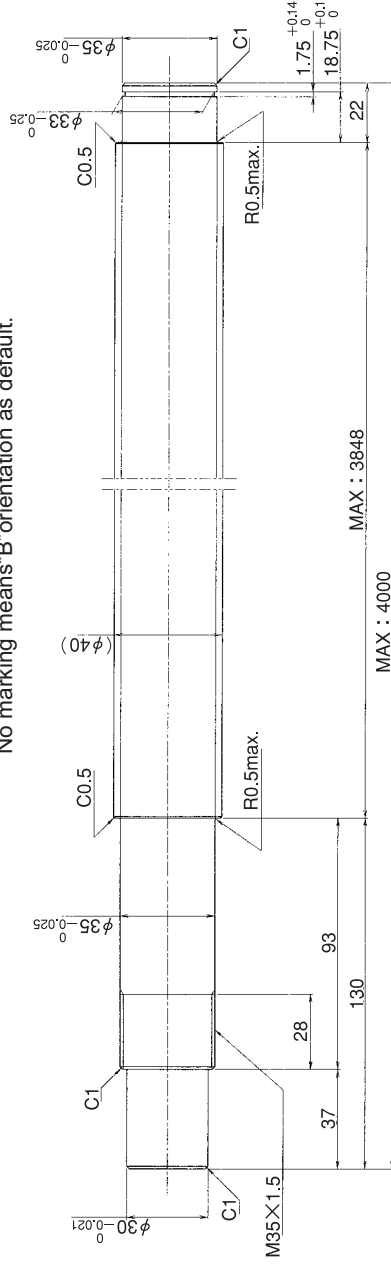
GY4010ES-HUBR- X -CAY



A

B

Select the orientation of nut flange by circling A or B.
No marking means "B" orientation as default.



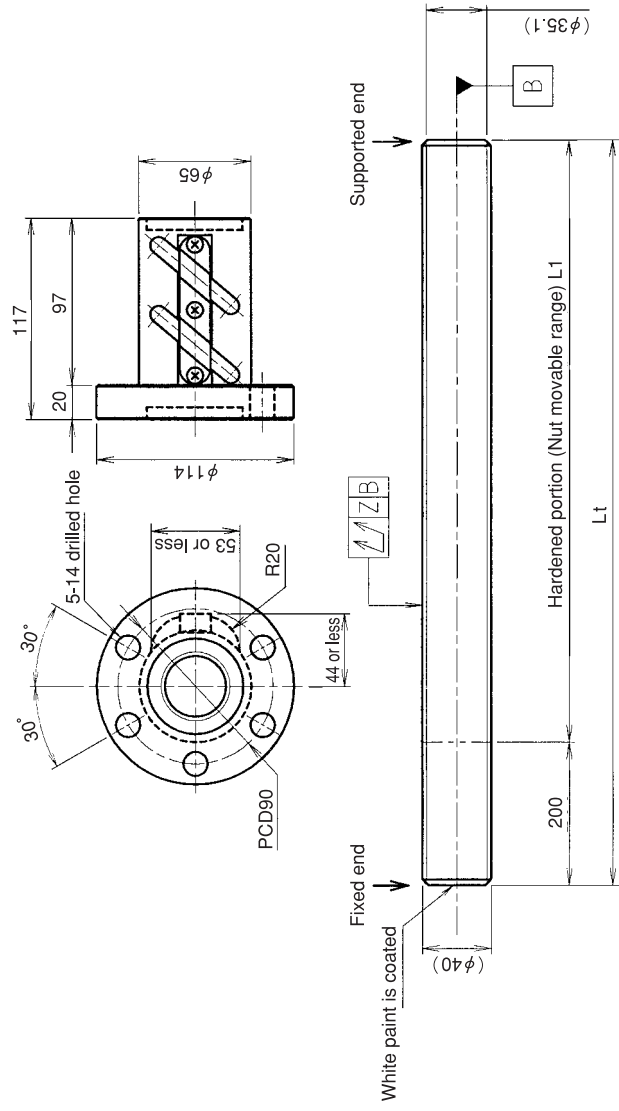
Applicable Support Unit
BUT-35(Fixed end unit) Refer to Page.443

Company Name		
Telephone		Name of Person in Charge
Company Address		

KURODA Standard Rolled Ball Screw:GY Series(Accuracy grade C10)

UNFINISHED SHAFT ENDS Screw shaft diameter $\phi 40$, Lead 10(T nut)

(Unit:mm)



Ball screw specifications

Screw shaft dia.	40	Basic dynamic load rating	49600N
Lead	10	Basic static load rating	153700N
Thread direction	Right-hand	Lubricant	Alvania Grease No.2
Number of circuits	3.5turn 2circuit	Surface treatment	Phosphate coating
Ball diameter	6.350		

Model No.	Axial clearance	L ₁	L _t	Z	Wiper
GY4010RS-CTBR-2000A		1800	2000	0.240	
GY4010RS-CTBR-3000A	-0.200	2800	3000	0.400	Brush wiper
GY4010RS-CTBR-4000A		3800	4000	0.640	

Table of optional specifications for each model

Additional machining of shaft end	Surface treatment(No.1)	Difference of grease	Direction of nut	Wiper removal
O	O	O	O	O

(Note 1) The above-mentioned surface treatment is LD treatment(coating thickness:1 to 2 μ m).

Notation of standard rolled ball screw

- Standard length shaft without end machining(Matched screw shaft and nut)
GY4010RS-CTBR-□□□□A
- Nut only without screw shaft
GY4010RS-CTBR
- Screw shaft only without end machining
GY4010ZZ-ZZZZ-□□□□D

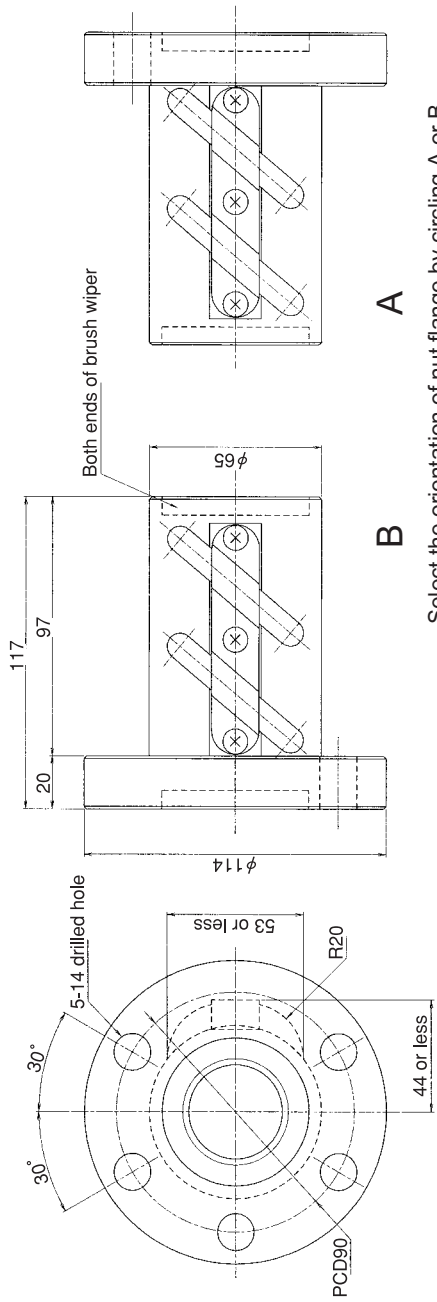
- With end machining specified on your drawing(Matched screw shaft and nut)
GY4010RS-CTBR-□□□□X□□□□-CAY
 - With end machining specified on your drawing (Screw shaft only)
GY4010ZZ-ZZZZ-□□□□Y□□□□-CAY
- Overall length Thread length

SHAFT END FINISH ORDERING SHEET

Screw shaft diameter Ø40, Lead 10(T nut)

(Unit:mm)

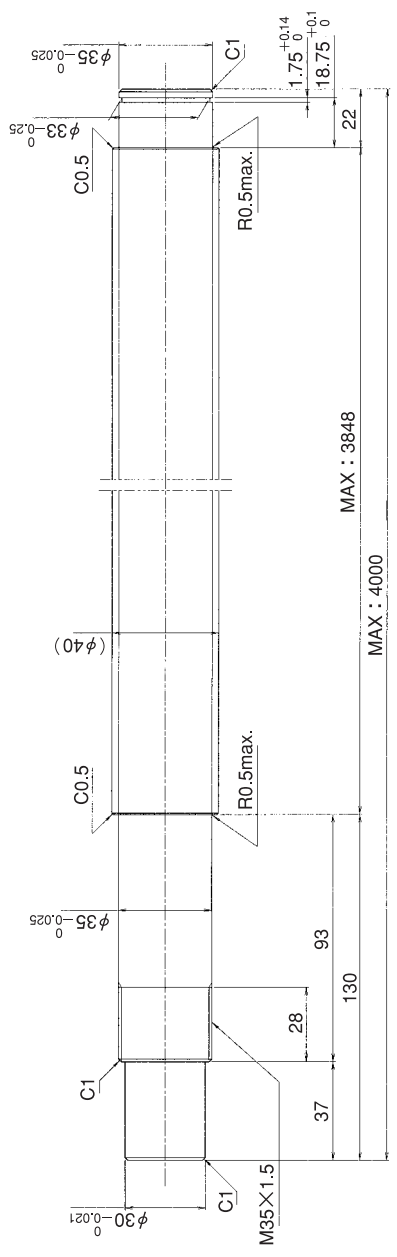
GY4010RS-CTBR- X -CAY



A

B

Select the orientation of nut flange by circling A or B.
No marking means "B" orientation as default.



Applicable Support Unit
BUT-35(Fixed end unit) Refer to Page.443

Company Name		
Telephone		Name of Person in Charge
Company Address		

Refer to page 24 for NOTATION OF MODEL NUMBER.