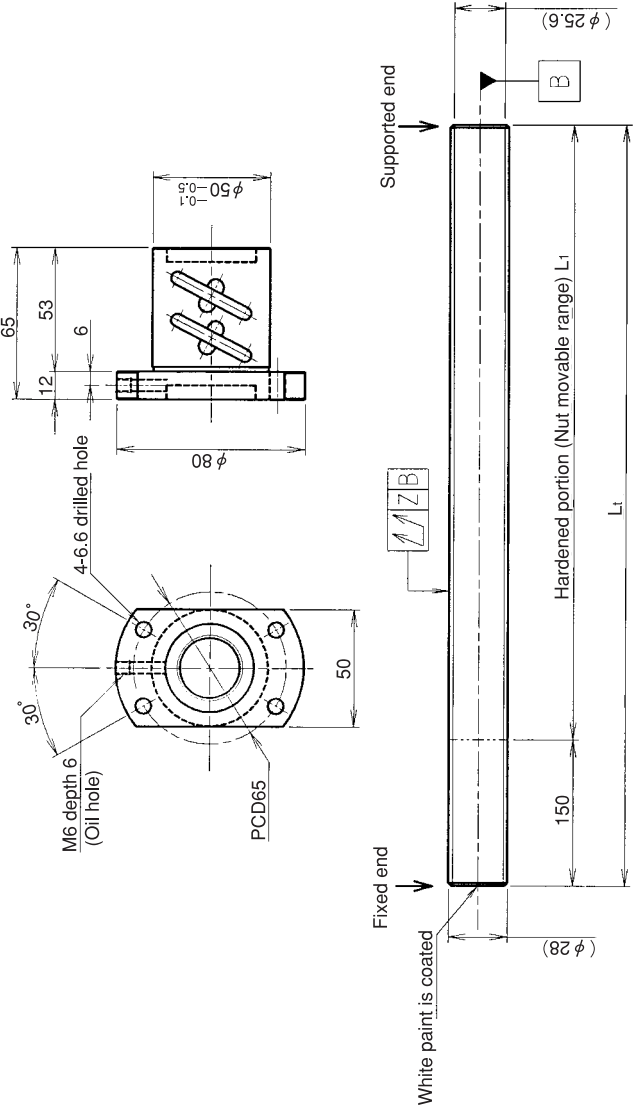


**KURODA** Standard Rolled Ball Screw:GY Series(Accuracy grade C10)

**UNFINISHED SHAFT ENDS**

**Screw shaft diameter Ø28, Lead 6(U nut)**

(Unit:mm)



**Ball screw specifications**

Screw shaft dia.	28	Basic dynamic load rating	12100N
Lead	6	Basic static load rating	42300N
Thread direction	Right-hand	Lubricant	Alvania Grease No.2
Number of circuits	2.5turn 2circuit	Surface treatment	Phosphate coating
Ball diameter	3.175		

Model No.	Axial clearance	L <sub>1</sub>	L <sub>t</sub>	Z	Wiper
GY2806ES-HUBR-1000A		850	1000	0.120	
GY2806ES-HUBR-2000A	-0.100	1850	2000	0.240	Brush wiper
GY2806ES-HUBR-2500A		2350	2500	0.640	

**Table of optional specifications for each model**

Additional machining of shaft end	Surface treatment(No.1)	Difference of grease	Direction of nut	Wiper removal
○	○	○	○	○

(Note 1) The above-mentioned surface treatment is LD treatment(coating thickness:1 to 2µm).

**Notation of standard rolled ball screw**

- Standard length shaft, without end machining(Matched screw shaft and nut)  
GY2806ES-HUBR-□□□□A
- Nut only without screw shaft  
GY2806ES-HUBR
- Screw shaft only without end machining  
GY2806ZZ-ZZZZ-□□□□D

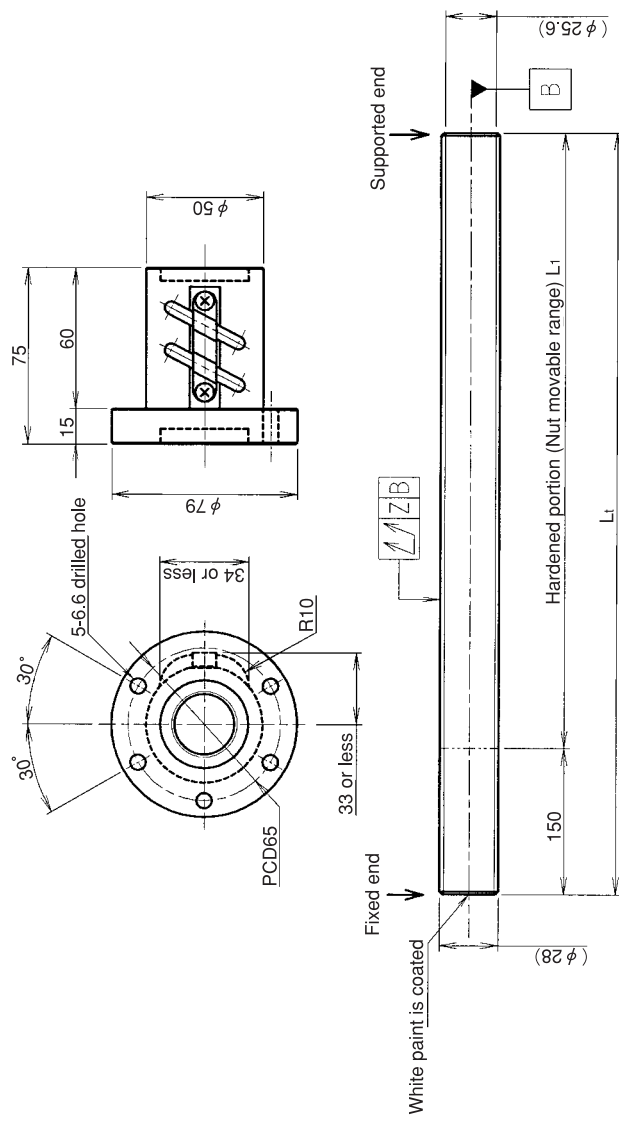
- With end machining specified on your drawing(Matched screw shaft and nut)  
GY2806ES-HUBR-□□□□X□□□□-CAY
  - With end machining specified on your drawing (Screw shaft only)  
GY2806ZZ-ZZZZ-□□□□Y□□□□-CAY
- Overall length      Thread length



**KURODA** Standard Rolled Ball Screw:GY Series(Accuracy grade C10)

# UNFINISHED SHAFT ENDS

(Unit:mm)



**Ball screw specifications**

Screw shaft dia.	28	Basic dynamic load rating	12100N
Lead	6	Basic static load rating	42300N
Thread direction	Right-hand	Lubricant	Alvania Grease No.2
Number of circuits	2.5turn 2circuit	Surface treatment	Phosphate coating
Ball diameter	3.175		

Model No.	Axial clearance	L <sub>1</sub>	L <sub>t</sub>	Z	Wiper
GY2806ES-CTBR-1000A		850	1000	0.120	Brush wiper
GY2806ES-CTBR-2000A	-0.100	1850	2000	0.240	
GY2806ES-CTBR-2500A		2350	2500	0.640	

**Table of optional specifications for each model**

Additional machining of shaft end	Surface treatment(No.1)	Difference of grease	Direction of nut	Wiper removal
O	O	O	O	O

(Note 1) The above-mentioned surface treatment is LD treatment(coating thickness:1 to 2µm).

**Notation of standard rolled ball screw**

- Standard length shaft without end machining(Matched screw shaft and nut)  
GY2806ES-CTBR-□□□□A
- Nut only without screw shaft  
GY2806ES-CTBR
- Screw shaft only without end machining  
GY2806ZZ-ZZZZ-□□□□D

- With end machining specified on your drawing(Matched screw shaft and nut)  
GY2806ES-CTBR-□□□□X□□□□-CAY
- With end machining specified on your drawing (Screw shaft only)  
GY2806ZZ-ZZZZ-□□□□Y□□□□-CAY

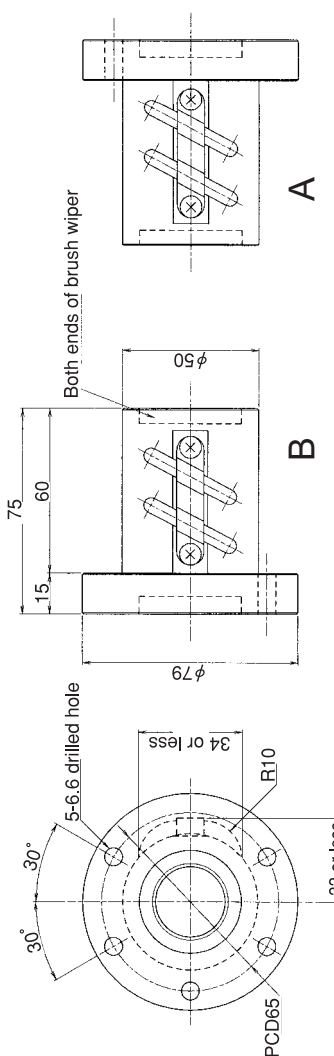
Overall length Thread length

**SHAFT END FINISH ORDERING SHEET**

**Screw shaft diameter Ø28, Lead 6(T nut)**

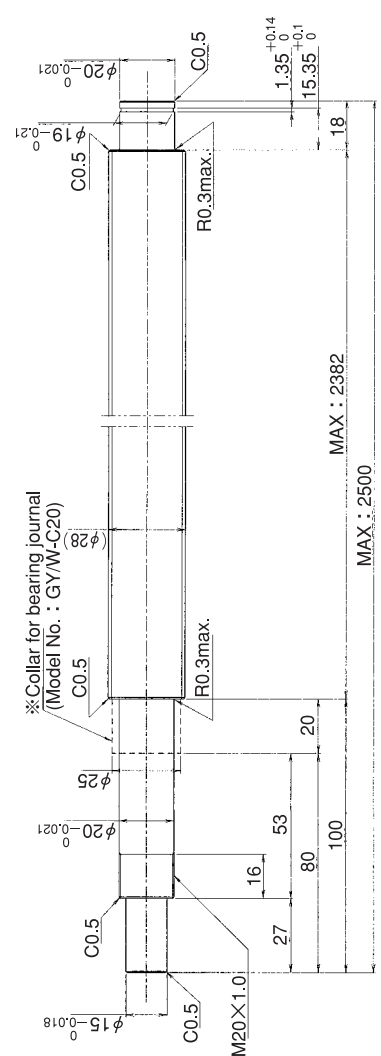
(Unit:mm)

GY2806ES-CTBR-     X     -CAY



**A**

Select the orientation of nut flange by circling A or B.  
No marking means "B" orientation as default.



\*Please place an order for collar separately.  
Applicable Support Unit  
Direct mount:BUK-20A(Fixed end unit+Supported end unit) Refer to Page.429  
Circle flange:BUM-20(Fixed end unit+Supported end bearing) Refer to Page.436

Company Name	
Telephone	Name of Person in Charge
Company Address	

Refer to page 24 for NOTATION OF MODEL NUMBER.