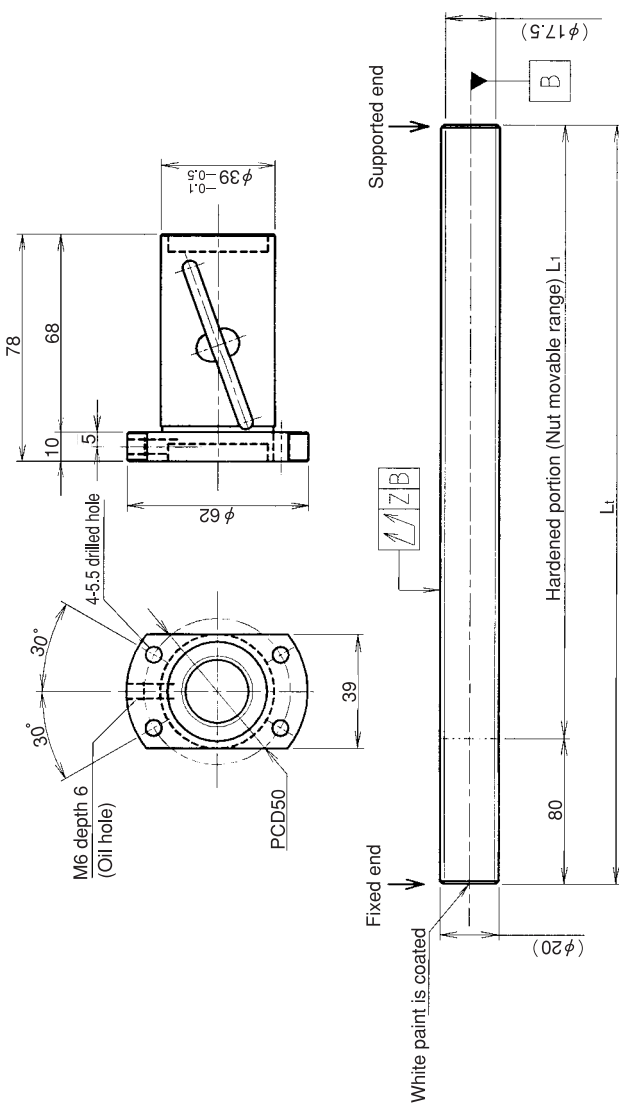


UNFINISHED SHAFT ENDS Screw shaft diameter Ø20, Lead 20(U nut)

(Unit:mm)



Ball screw specifications

Screw shaft dia.	20	Basic dynamic load rating	6200N
Lead	20	Basic static load rating	14700N
Thread direction	Right-hand	Lubricant	Alvania Grease No.2
Number of circuits	2.5turn 1circuit	Surface treatment	Phosphate coating
Ball diameter	3.175		

Model No.	Axial clearance	L ₁	L _t	Z	Wiper
GY2020DS-HULR-0600A		520	600	0.140	
GY2020DS-HULR-1200A	-0.100	1120	1200	0.240	Lip seal
GY2020DS-HULR-2000A		1920	2000	0.640	

Table of optional specifications for each model

Additional machining of shaft end	Surface treatment(No.1)	Difference of grease	Direction of nut	Wiper removal
○	○	○	○	○

(Note 1) The above-mentioned surface treatment is LD treatment(coating thickness:1 to 2µm).

Notation of standard rolled ball screw

- Standard length shaft without end machining(Matched screw shaft and nut)
GY2020DS-HULR-□□□□A
- Nut only without screw shaft
GY2020DS-HULR
- Screw shaft only without end machining
GY2020ZZ-ZZZZ-□□□□D

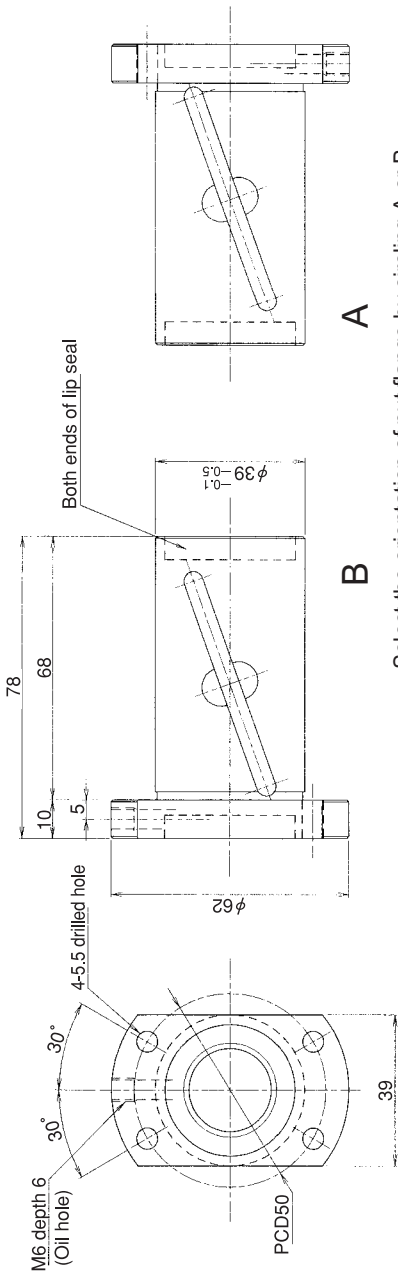
- With end machining specified on your drawing(Matched screw shaft and nut)
GY2020DS-HULR-□□□□X□□□□-CAY
 - With end machining specified on your drawing (Screw shaft only)
GY2020ZZ-ZZZZ-□□□□Y□□□□-CAY
- Overall length Thread length

SHAFT END FINISH ORDERING SHEET

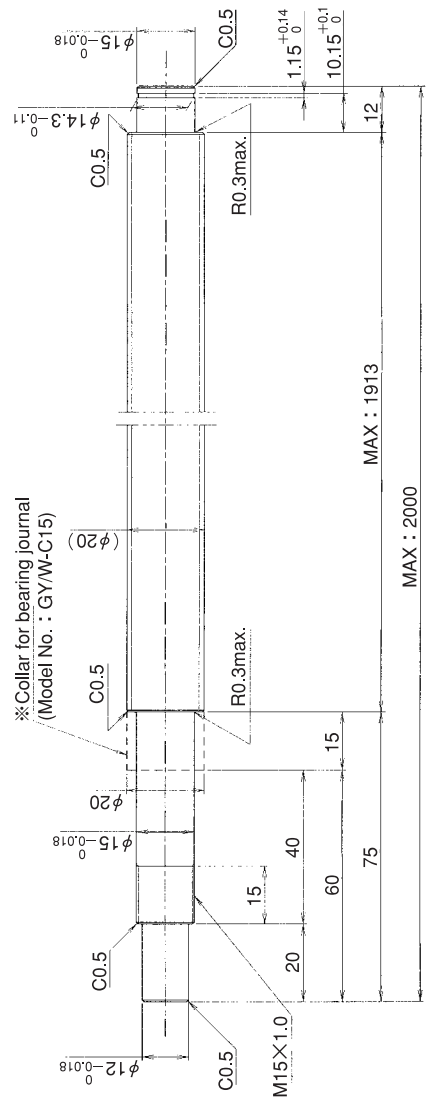
Screw shaft diameter Ø20, Lead 20(U nut)

(Unit:mm)

GY2020DS-HULR- X -CAY



A
 Select the orientation of nut flange by circling A or B.
 No marking means "B" orientation as default.



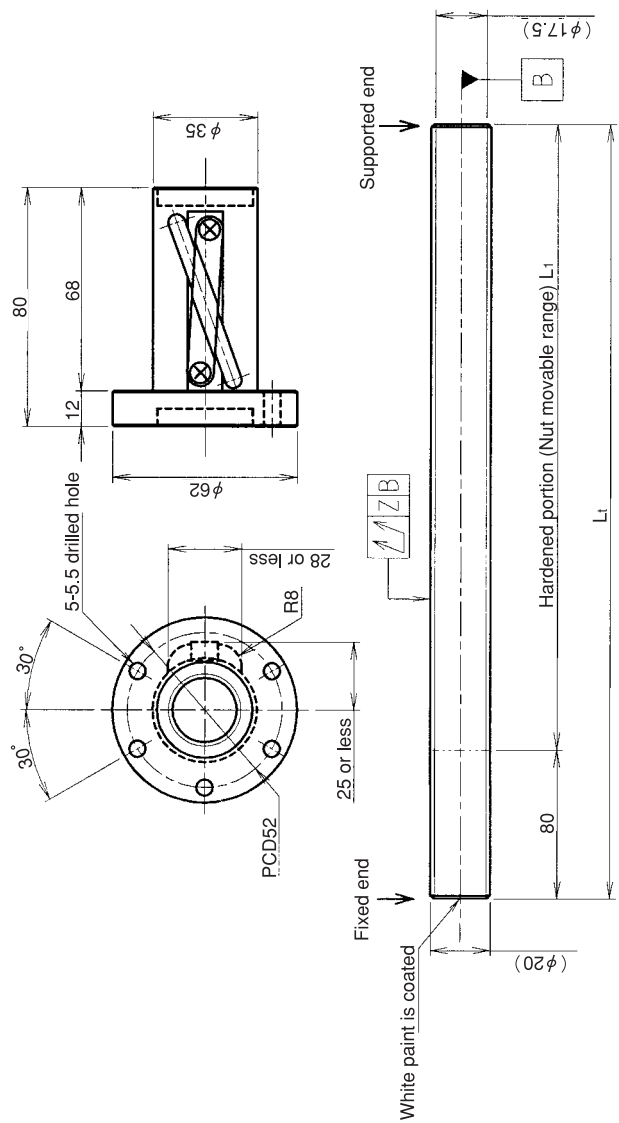
*Please place an order for collar separately.
 Applicable Support Unit
 Direct mount:BUK-15A(Fixed end unit+Supported end unit) Refer to Page.428
 Circle flange:BUM-15(Fixed end unit+Supported end bearing) Refer to Page.435

Company Name	
Telephone	Name of Person in Charge
Company Address	

Refer to page 24 for NOTATION OF MODEL NUMBER.

UNFINISHED SHAFT ENDS Screw shaft diameter Ø20, Lead 20(T nut)

(Unit:mm)



Ball screw specifications

Screw shaft dia.	20	Basic dynamic load rating	6200N
Lead	20	Basic static load rating	14700N
Thread direction	Right-hand	Lubricant	Alvania Grease No.2
Number of circuits	2.5turn 1circuit	Surface treatment	Phosphate coating
Ball diameter	3.175		

Model No.	Axial clearance	L ₁	L _t	Z	Wiper
GY2020DS-CTLR-0600A	-0.100	520	600	0.140	
GY2020DS-CTLR-1200A		1120	1200	0.240	Lip seal
GY2020DS-CTLR-2000A		1920	2000	0.640	

Table of optional specifications for each model

Additional machining of shaft end	Surface treatment(No.1)	Difference of grease	Direction of nut	Wiper removal
○	○	○	○	○

(Note 1) The above-mentioned surface treatment is LD treatment(coating thickness:1 to 2µm).

Notation of standard rolled ball screw

- Standard length shaft without end machining(Matched screw shaft and nut)
GY2020DS-CTLR-□□□□A
- Nut only without screw shaft
GY2020DS-CTLR
- Screw shaft only without end machining
GY2020ZZ-ZZZZ-□□□□D

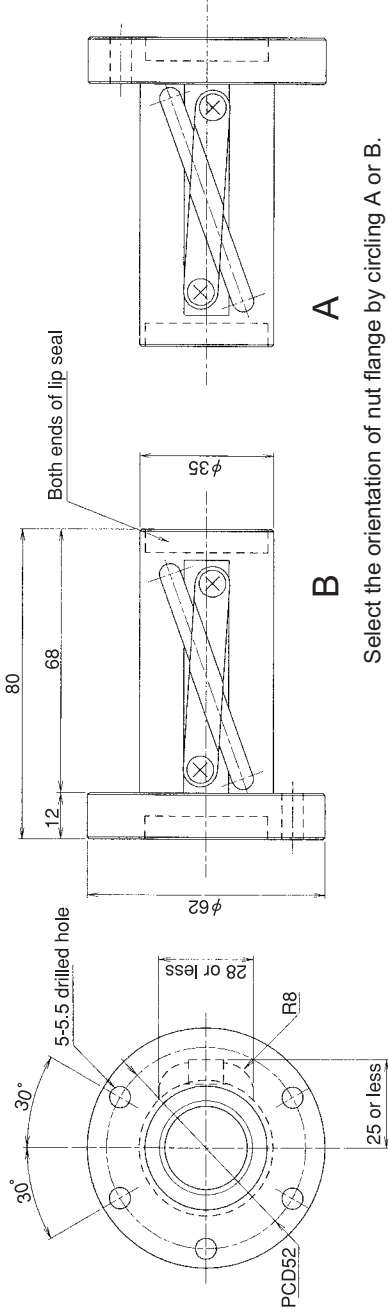
- With end machining specified on your drawing(Matched screw shaft and nut)
GY2020DS-CTLR-□□□□X□□□□-CAY
 - With end machining specified on your drawing (Screw shaft only)
GY2020ZZ-ZZZZ-□□□□Y□□□□-CAY
- Overall length Thread length

SHAFT END FINISH ORDERING SHEET

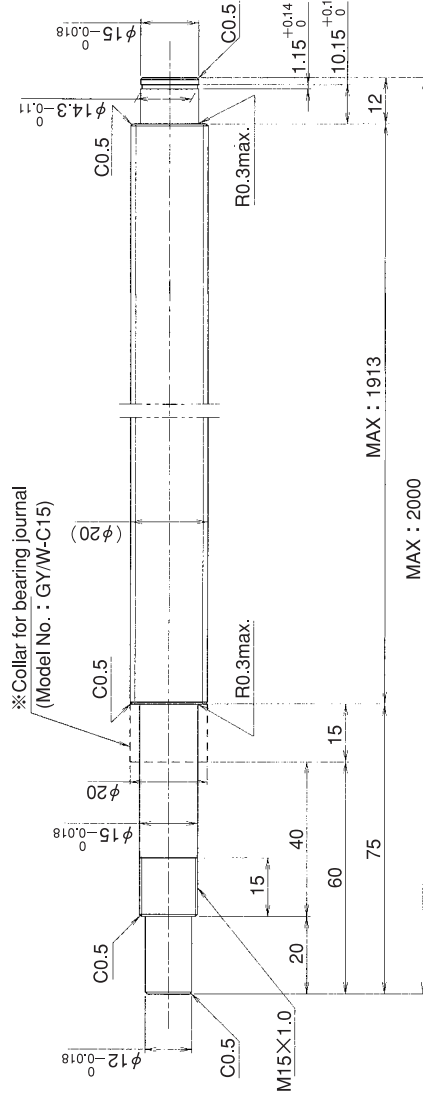
Screw shaft diameter Ø20, Lead 20(T nut)

GY2020DS-CTLR- X -CAY

(Unit:mm)



Select the orientation of nut flange by circling A or B.
No marking means "B" orientation as default.



*Please place an order for collar separately.

Applicable Support Unit

Direct mount:BUK-15A(Fixed end unit+Supported end unit) Refer to Page.428

Circle flange:BUM-15(Fixed end unit+Supported end bearing) Refer to Page.435

Company Name	
Telephone	Name of Person in Charge
Company Address	