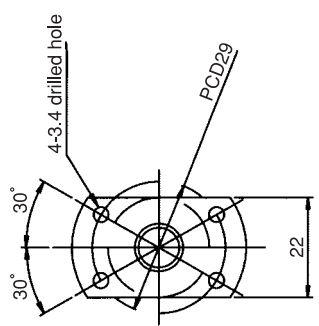
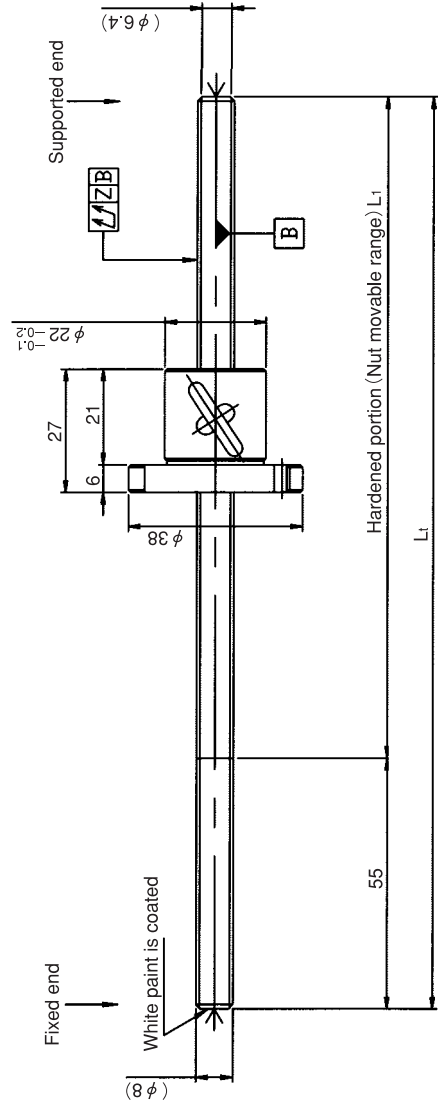


KURODA Standard Rolled Ball Screw:GY Series(Accuracy grade C10)

UNFINISHED SHAFT ENDS

Screw shaft diameter Ø8, Lead 5(U nut)

(Unit:mm)



Ball screw specifications

Screw shaft dia.	8	Basic dynamic load rating	1900N
Lead	5	Basic static load rating	3100N
Thread direction	Right-hand	Lubricant	Alvania Grease No.2
Number of circuits	2.5turn 1circuit	Surface treatment	Phosphate coating
Ball diameter	2.0000		

Model No.	Axial clearance	L ₁	L _t	Z	Wiper
GY0805DS-HUNR-0200A	-0.050	145	200	0.080	Without
GY0805DS-HUNR-0400A		345	400	0.200	

Table of optional specifications for each model

Additional machining of shaft end	Surface treatment(No.1)	Difference of grease	Direction of nut
○	○	○	○

(Note 1)The above-mentioned surface treatment is LD treatment(coating thickness:1 to 2µm).

Notation of standard rolled ball screw

- Standard length shaft without machining(Matched screw shaft and nut)
GY0805DS-HUNR-□□□□A
- Nut only without screw shaft
GY0805DS-HUNR
- Screw shaft only without end machining
GY0805ZZ-ZZZZ-□□□□D

- With end machining specified on your drawing(Matched screw shaft and nut)
GY0805DS-HUNR-□□□□X□□□□-CAY
- With end machining specified on your drawing(Screw shaft only)
GY0805ZZ-ZZZZ-□□□□Y□□□□-CAY

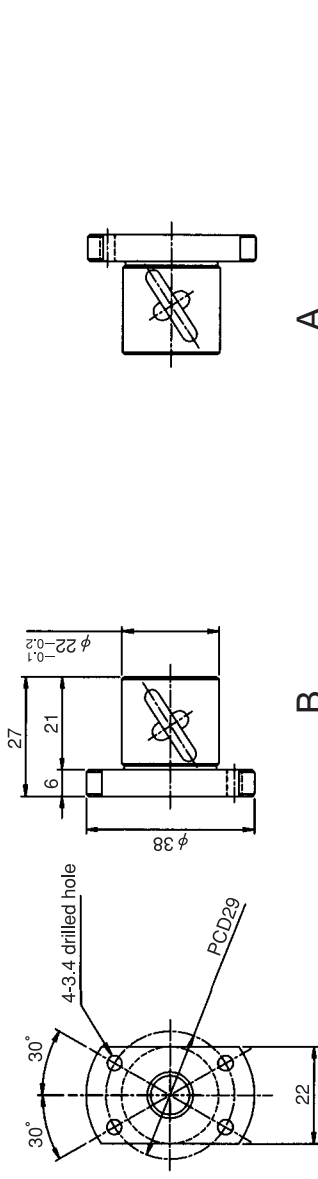
Overall length Thread length

SHAFT END FINISH ORDERING SHEET

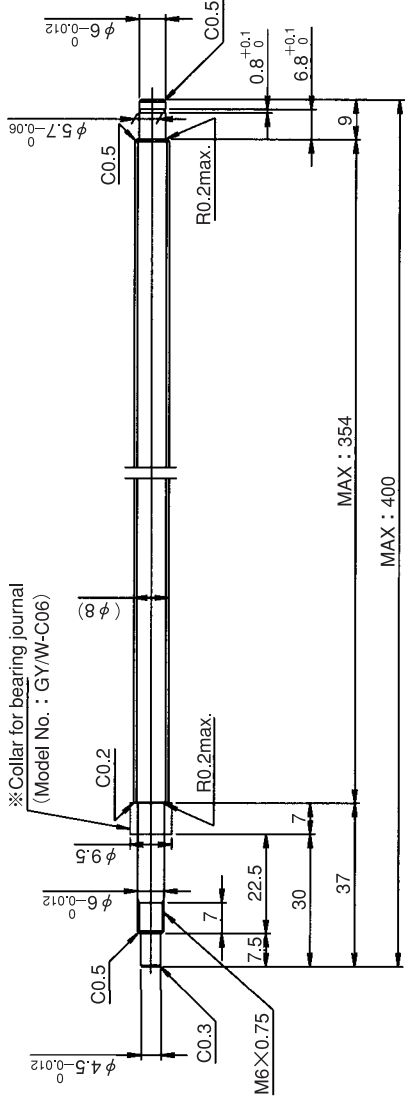
Screw shaft diameter Ø8, Lead 5(U nut)

(Unit:mm)

GY0805DS-HUNR- X -CAY



A
 Select the orientation of nut flange by circling A or B.
 No marking means "B" orientation as default.



*Please place an order for collar separately.
 Applicable Support Unit
 Direct mount:BUK-6(Fixed end unit+Supported end bearing)Refer to Page.424
 Circle flange:BUM-6(Fixed end unit+Supported end bearing)Refer to Page.431

Company Name	
Telephone	Name of Person in Charge
Company Address	

Refer to page 24 for NOTATION OF MODEL NUMBER.