

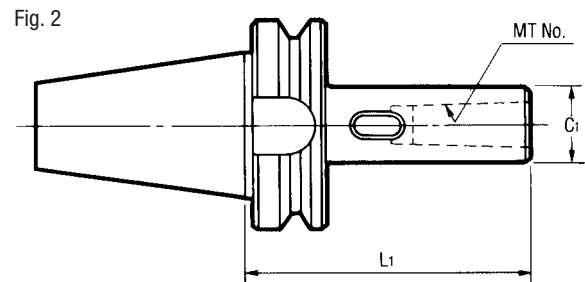
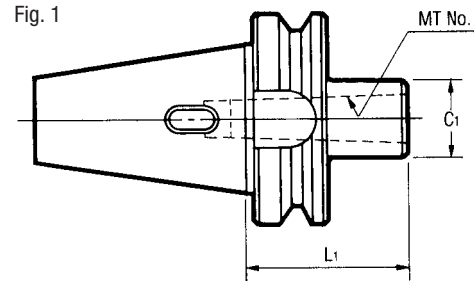
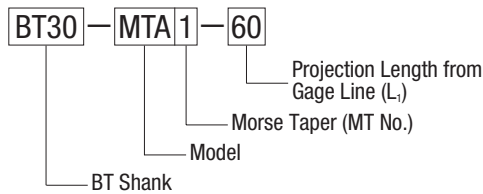
Taper Holders

Morse Taper Holder Type A/MTA (With Tang)

• This is a holder for holding cutting tools that have morse taper shanks with tangs.



Ordering Instructions



(Unit: mm)

Code No. 282	Model No.	Fig.	MT No.	L ₁	C ₁	Machining Capacity			Weight (kg)
						Drill	Reamer	End Mill	
888520	BT30-MTA1- 60	1	1	60	25	φ 2~φ 14	φ 5 ~ φ 14	φ 10~φ 14	0.7
888521	-120	2		120					0.9
888522	-180	2		180					1.1
888523	-MTA2- 60	1	2	60	32	φ 14~φ 23	φ 14.5~φ 23	φ 16~φ 22	0.6
888524	-120	2		120					1.1
888525	-180	2		180					1.4
888526	-MTA3- 90	1	3	90	40	φ 23~φ 32	φ 24 ~ φ 32	φ 24~φ 32	1.2
888527	-135	2		135					1.4
888540	BT40-MTA1- 45	1		1					45
888541	-120	2	120		1.3				
888542	-180	2	180		1.6				
888543	-MTA2- 45	1	2	45	32	φ 14~φ 23	φ 14.5~φ 23	φ 16~φ 22	1.0
888544	-120	2		120					1.6
888545	-180	2		180					2.0
888546	-MTA3- 75	1	3	75	40	φ 23~φ 32	φ 24 ~ φ 32	φ 24~φ 32	1.0
888547	-135	2		135					1.7
888548	-180	2		180					2.2
888549	-MTA4- 90	1	4	90	50	φ 32~φ 50	φ 32 ~ φ 50	φ 35~φ 40	1.1
888550	-165	2		165					2.6
888562	BT50-MTA1- 45	1		1					45
888563	-120	2	120		3.9				
888564	-180	2	180		4.1				
888565	-MTA2- 45	1	2	45	32	φ 14~φ 23	φ 14.5~φ 23	φ 16~φ 22	3.5
888566	-135	2		135					4.1
888567	-180	2		180					4.4
888568	-MTA3- 45	1	3	45	40	φ 23~φ 32	φ 24 ~ φ 32	φ 24~φ 32	3.4
888569	-150	2		150					4.4
888570	-180	2		180					4.7
888571	-MTA4- 75	1	4	75	50	φ 32~φ 50	φ 32 ~ φ 50	φ 35~φ 40	3.6
888572	-180	2		180					5.1
888573	-MTA5-105	1		5					105
888574	-120	2	120		4.5				
888575	-210	2	210		7.2				