



September 2004

MOLDMAKING TECHNOLOGY

ENGINEER, BUILD, REPAIR **magazine**

A Communication Technologies, Inc. Publication
www.moldmakingtechnology.com

**AVOID MACHINING CHATTER AND
CREATE A COMPETITIVE EDGE**

THE BENEFITS OF PRESSURE SENSORS

**CREATING A MORE PROFITABLE
RETIREMENT**

PREVENTING COSTLY MOLD MISTAKES

SPECIAL FEATURE:
EDUCATION/TRAINING TURN TO PAGE 77.

CASTING



2005 Leadtime Leader Award

Think your shop has what it takes to be 2005's Leadtime Leader?

This award is designed to recognize outstanding U.S. moldmaking shops and their ability to succeed in a globally competitive environment. Nominate your shop today!

Turn to **page 74**.



Software

Datron Dynamics (Milford, NH) introduces new Windows-based control, delivering substantially increased flexibility and ease-of-use plus remote diagnostics and monitoring capabilities. The ability to view or edit programs during machining, run other software simultaneously as a machine is milling, or download large files through a company network are just a few examples of the dynamic capabilities of a new Windows-based control software program available for its CNC machines. Additionally, via a standard Internet connection, a user can remotely diagnose the machine or monitor the machine's activity anytime, anywhere. Interfacing with the software is easily done with keystrokes on the keyboard or a simple click of the mouse.

The Windows-based control software includes a comprehensive simulation section, which has ability to print the part as a graphic, export a simulation as a jpeg or analyze and obtain statistics on a region of a part including the estimated cycle time. A color system indicates the depths of cut and can animate the machining process. For CAD/CAM packages with more sophisticated three-dimensional surfacing capabilities, the Datron control offers a unique smoothing feature that allows the operator to turn the command on or off at any point in a program and optimize the vector travel of the machine, creating significant improvements in surface finish and production times. This feature is extremely beneficial in three-dimensional machining and has reduced cycle times by half, in some cases.

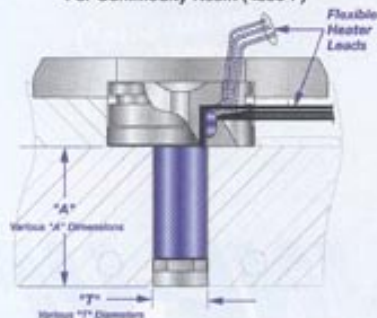
For Information Circle No. 256

Anatomy of a Better Nozzle.

OSCO's HSN Hot Sprue Nozzle

NEW

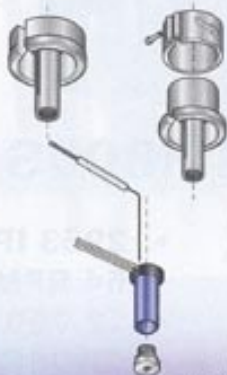
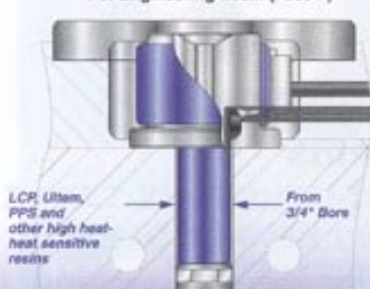
"G" Style / Single Zone For Commodity Resin (<530°F)



Simple and Effective

- ◆ Even Temperature Control
- ◆ Replaceable Components
- ◆ Field Serviceable
- ◆ Cost Effective

"H" Style / Dual Zone For Engineering Resin (>530°F)



OSCO inc.

RUNNERLESS MOLDING SYSTEMS

ISO 9001 Registered

1.800.499.OSCO

www.oscosystems.com

For Information Circle No. 52